

HDMI Input Card for CVI8XM

Step1. Wiring

1.1 Plug in the input card into any free slot on the matrix. Connect the card to switcher with net cable from the 'NET' port, and connect the video input source to the 'HDMI' port.

Step2. IP configuration

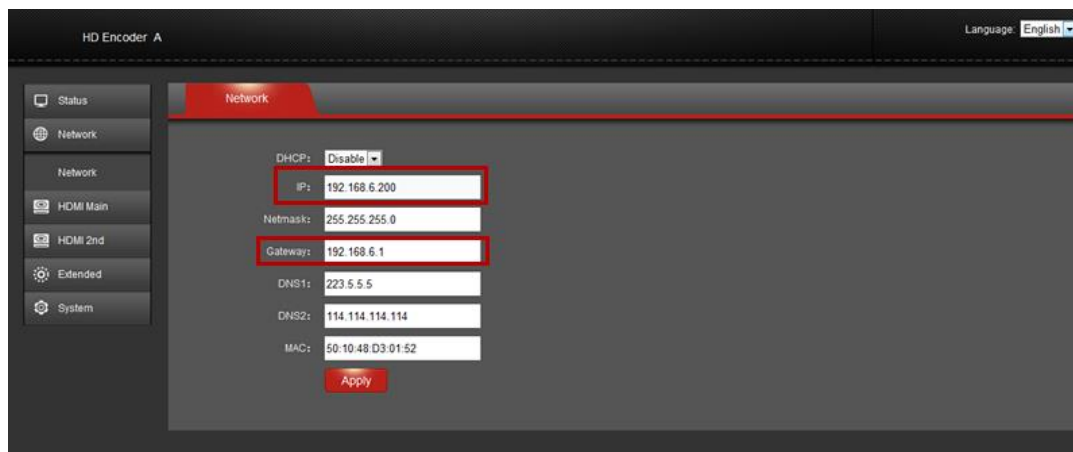
2.1 Find the default IP address on the sticker on the card body, 192.168.6.200 for example.

2.2 Log in the web page of the input card by inputting the IP address on your browser.

Default user name: admin

Default password: admin

2.3 After you log in, find the 'Network' tab as blow shown:



The default gateway of input card is 6. Please ensure that the IP Address of each unit is on the same gateway. For example, If the IP Address of the computer is 192.168.6.50, all equipment IP Address should be 192.168.6.n. Pls change the 'IP' and 'Gateway' according to your actual network environment, the IP address must be free and no other conflict.

COSTAR VIDEO SYSTEMS

Step3. Output configuration

3.1 Click on the 'HDMI main' tab and select 'main' shown as below:

HD Encoder A

Language: English

Status

Network

HDMI Main

main

HDMI 2nd

Extended

System

HDMI Main

Set Stream Venc: H265

Video Input: HDMI

channel name: chan

Bitrate control: cbr

Key interval: 30 [5-200]

Encoded size: auto

Bitrate: 3200 [16-12000]

Fluctuate Level: auto

Encoding frame rat: 25 [5-60]

The default encoding mode is 'H.265', and default video input is 'HDMI'. Please configure according to your need.

Look down you will find the RTSP setting shown as below picture:

HTTP: /hdm Disable Start with "/"

HTTP Port: 80 [1-65535]

RTSP: /hdm Enable Start with "/"

RTSP Port: 554 [1-65535]

RTSP mode: video+audio

unicast IP: 200.0.0.1 Disable

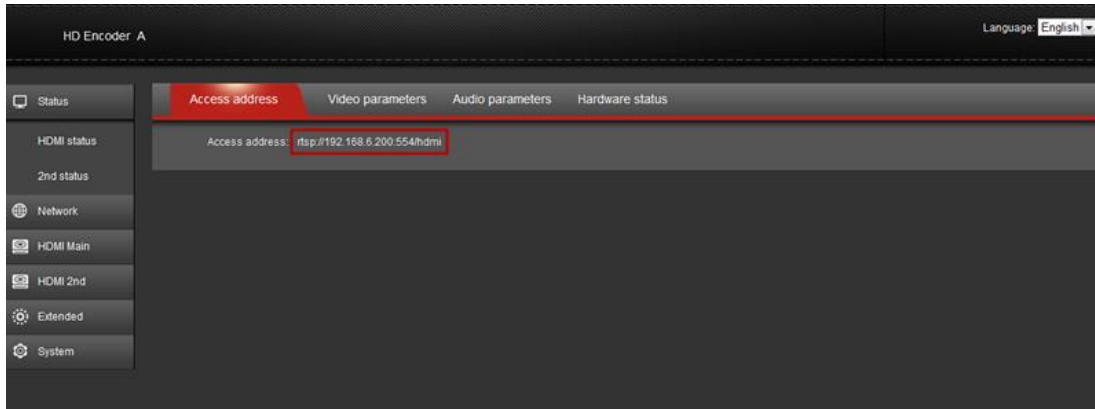
unicast port: 1234 [1-65535]

Multicast IP: 238.0.0.1 Disable

Make sure it's status is 'Enable'.

COSTAR VIDEO SYSTEMS

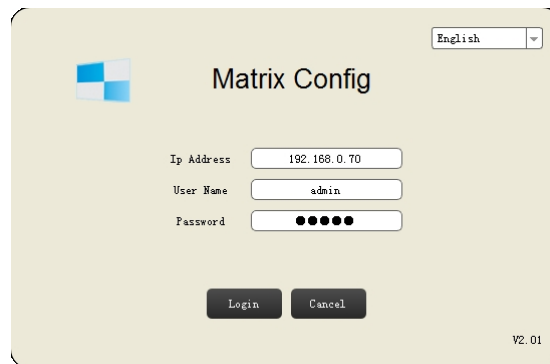
3.2 Come to the 'Status' tab and see the 'Access address' as below:



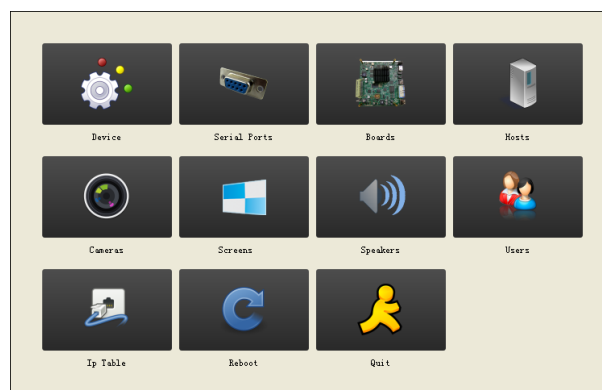
Be sure to copy the 'Access address' as shown highlighted above, and store it in your computer.

Step4. Matrix configuration

4.1 Open the Matrix config software on your PC, and log in by the matrix IP address. Default username and password are 'admin' and '12345'.

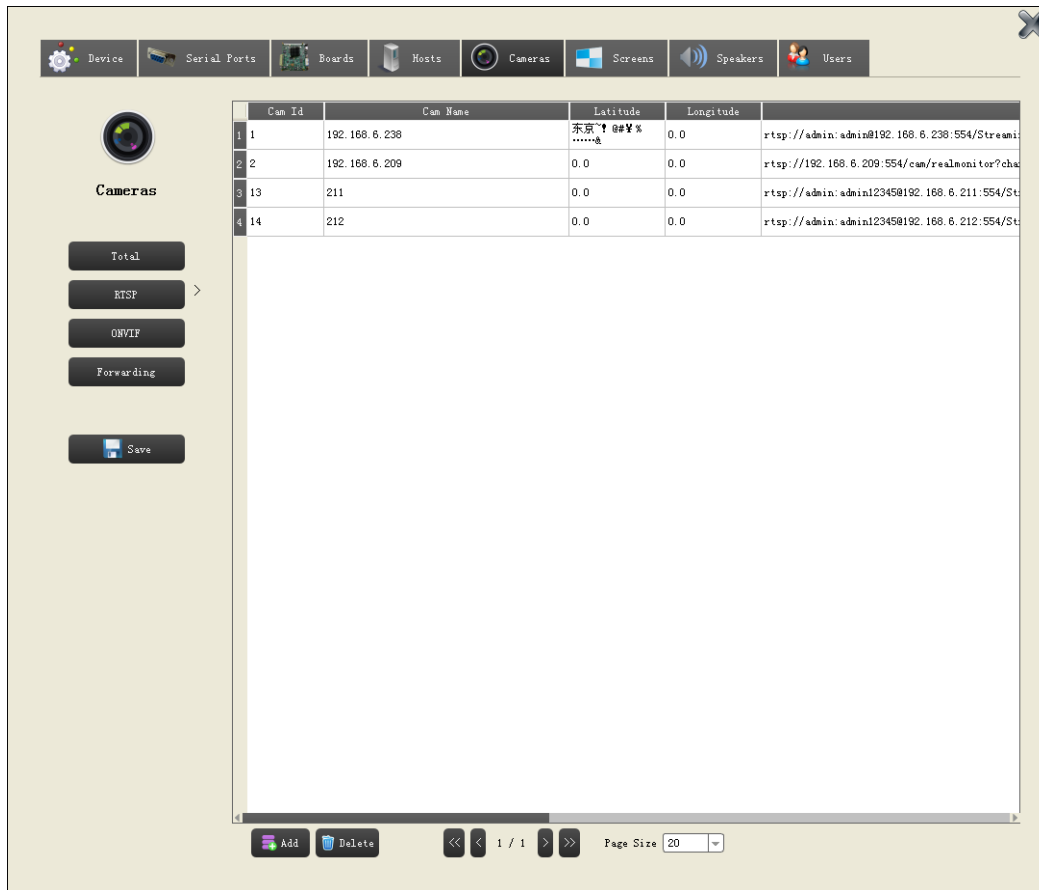


Then you will see below menu.

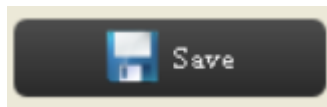


COSTAR VIDEO SYSTEMS

4.2 Click on the 'Camera' tab, and click on 'RTSP', you will see below interface:



Click on 'Add', then you can create a camera name for the video source, and paste the '**Access address**' that you copied from the input card web page earlier.



Don't forget to click

Following configuration, please operate the system according to Matrix & Keyboard user manual for displaying the video on to your video wall.

For any additional questions please contact our Technical support department at 469-635-6820 Monday through Friday 8:00 AM -5:00 PM CST.

Note: The information supplied in this manual is subject to change without prior notice.