



IP VIDEO WALL MATRIX SYSTEM

Net Client Software

User Manual

V2.03-4 022017

Index

1 Net Client program installation and log in 3

2 Matrix management 4

3 TV wall management 6

 3.1 Camera list 7

 3.2 Macros number 9

 3.3 Solution patrol 10

 3.4 Matrix control operation 12

 3.5 Screen operation 13

 3.6 Window operation 13

4 Video preview 15

 4.1 Real-time play 15

 4.2 video visit and playback 17

Client Software Operation

1 Net Client program installation and log in

Double click 'Setup.exe', Choose a language, 'English' default as shown in picture below:

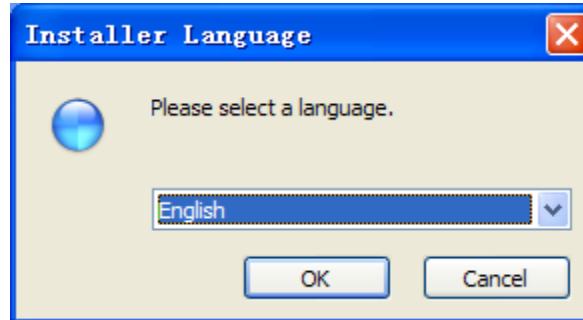


Fig1.1 language selection

After clicking 'OK', select the location of the installation directory.

Note: Some antivirus program might block the program.

It is recommended that you disable your antivirus program temporarily before installation.

Following installation, double click HD – Matrix Client, you will see below interface, Click 'Controller Panel' to enter into Main Menu page, as shown in picture below:

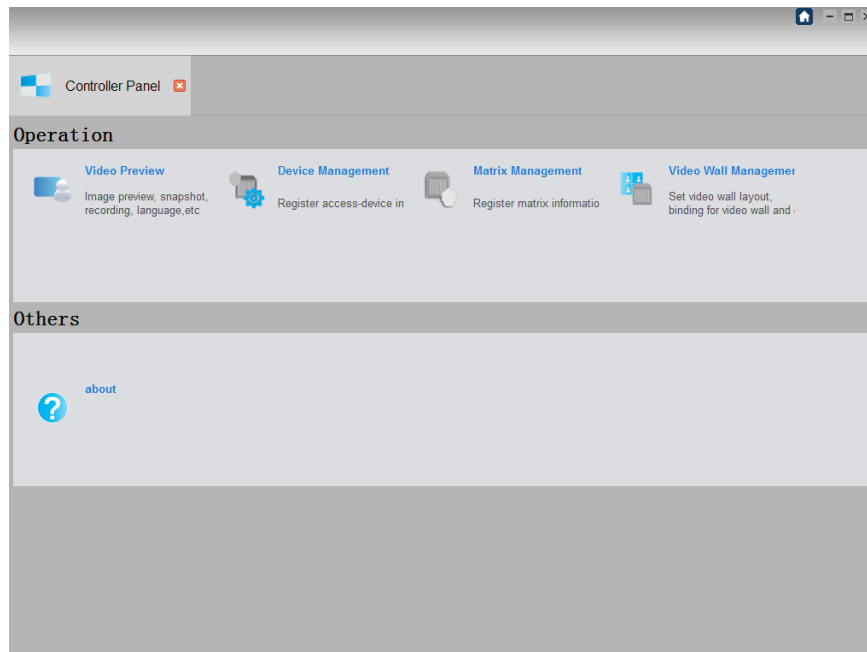


Fig 1.2 Client control panel

2 Matrix management

Click on 'Matrix management'. In this menu you can add devices, modify settings, delete or clear current devices as shown in the picture below:

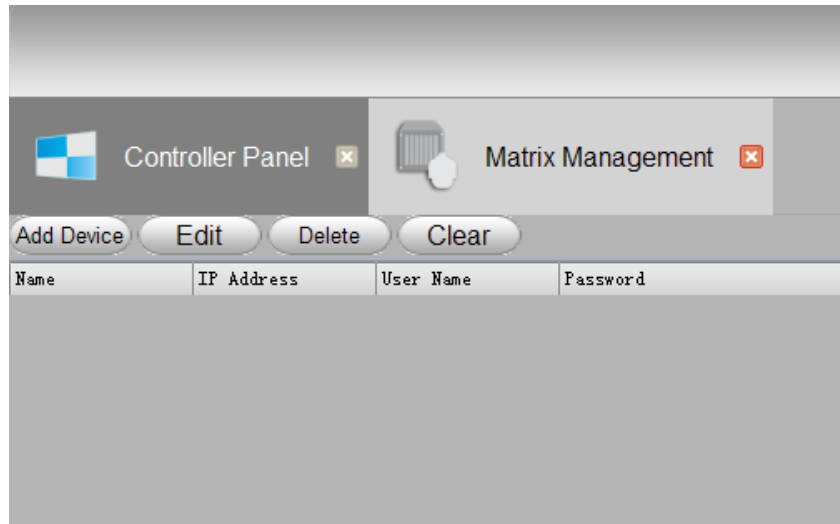


Fig 2.1 Matrix Management

A. Adding device

Click 'add device' button, fill required info in the right section of the page, as shown in picture below:

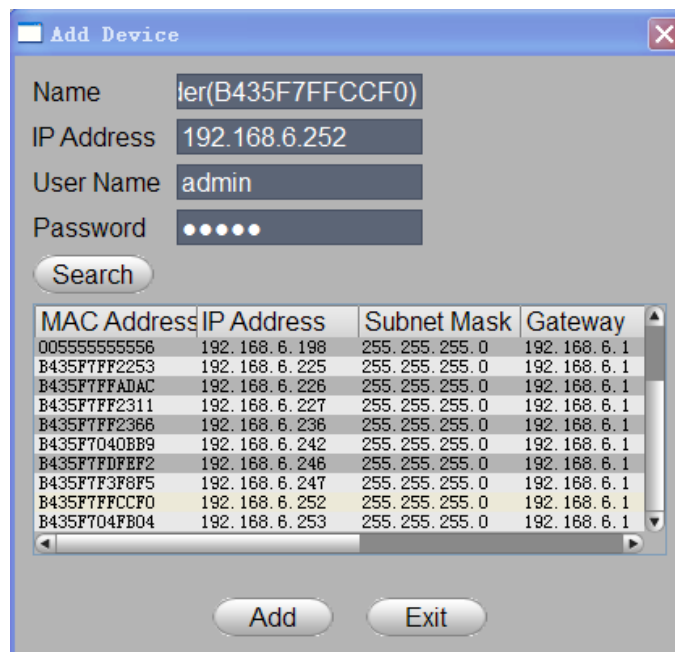


Fig 2.2 Add Device

Net Client Software

Or you can click 'Search' button to search for available equipment. For example, IP address: 192.168.6.252, you can click it to add the device directly; the name, IP address, account and passcode will be automatically displayed. If the device is not in the list or the list contains too many devices, you can add it manually by inputting name, IP address, user account and password.

Name: It will be shown on control interface and catalog tree after log in Matrix.

IP Address: Matrix IP address.

Account: The user name you use to log in the matrix; default is 'admin'.

Password: Password for log in matrix; default is '12345'.

☐ Add Device

Name: ler(B435F7FFCCF0)

IP Address: 192.168.6.252

User Name: admin

Password: •••••

Search

MAC Address	IP Address	Subnet Mask	Gateway
005555555556	192.168.6.198	255.255.255.0	192.168.6.1
B435F7FF2253	192.168.6.225	255.255.255.0	192.168.6.1
B435F7FFADAC	192.168.6.226	255.255.255.0	192.168.6.1
B435F7FF2311	192.168.6.227	255.255.255.0	192.168.6.1
B435F7FF2366	192.168.6.236	255.255.255.0	192.168.6.1
B435F7040BB9	192.168.6.242	255.255.255.0	192.168.6.1
B435F7FDFF2	192.168.6.246	255.255.255.0	192.168.6.1
B435F7F3F8F5	192.168.6.247	255.255.255.0	192.168.6.1
B435F7FFCCF0	192.168.6.252	255.255.255.0	192.168.6.1
B435F704FB04	192.168.6.253	255.255.255.0	192.168.6.1

Add Exit

Fig 2.2 Add Device

B. Modification

Choose a device in list, click 'Modify' button to change aliases, account name and password.

C. Delete

Choose a device in list, click 'delete' to delete device.

D. Clear

Click 'Clear' to delete all devices.

3 TV wall management

Click “Video Wall Management” to enter the page as shown in picture below:

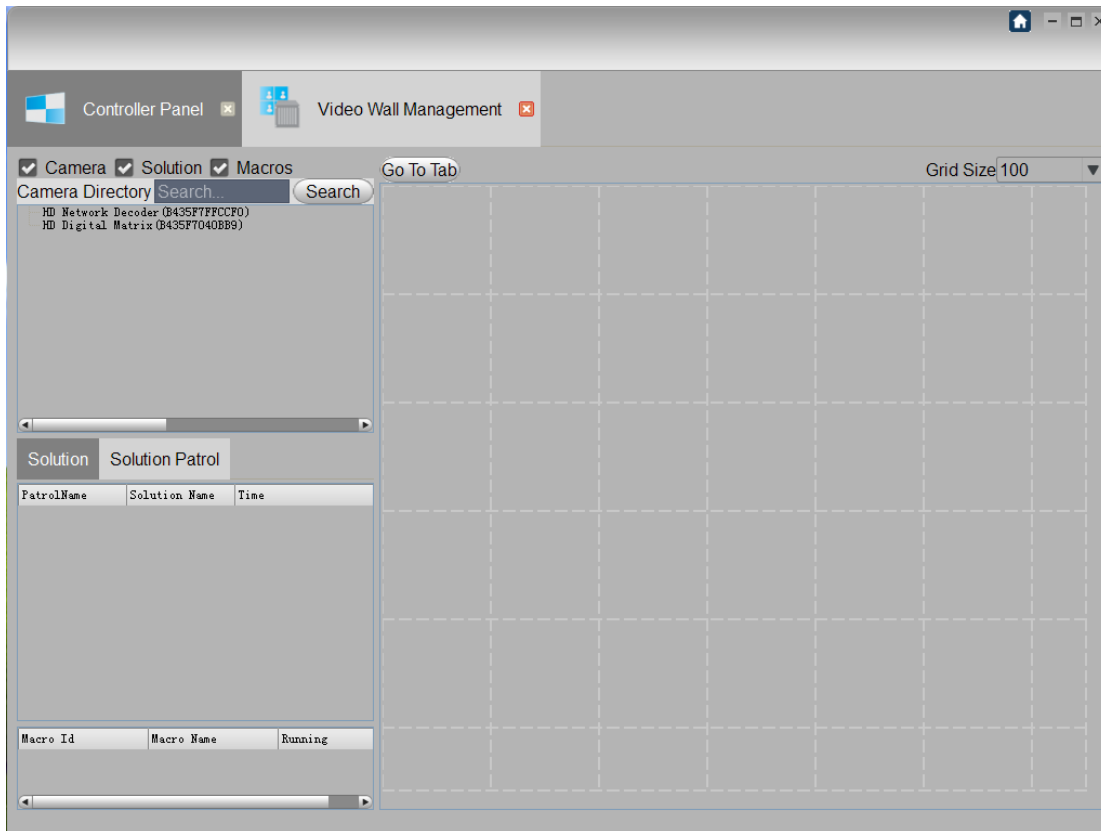


Fig 3.1 TV wall management

You can open or close the camera list, plan and macros list here. You can drag cameras to the wall display zone on the right side. The size of the grid can be customized.

3.1 Camera list

Choose the name of the matrix like 'HD Network Digital Matrix', drag it to the grid on the right, it will shows 'Matrix control window' and begin to create the different layouts as shown in picture below:

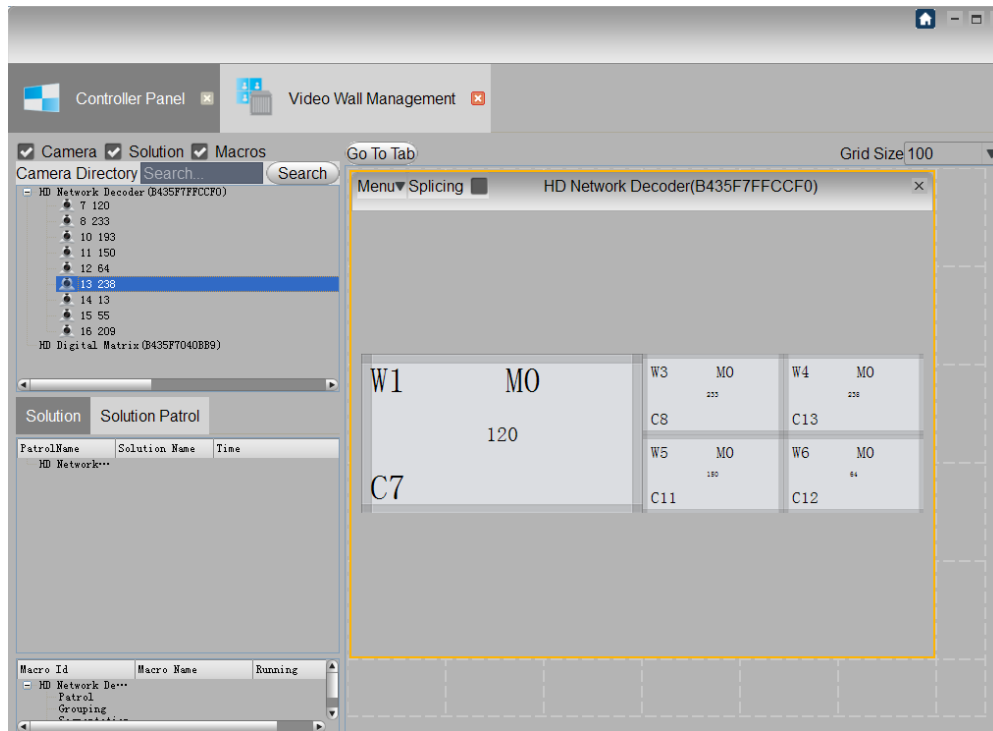


Fig 3.2 matrix log in

As above, 'Video wall management' page is created from list of 'Matrix management', the matching matrix aliases is shown as first level label in camera list, and the camera list which is matching to matrix as the second level label.

A. Display zone of Video wall: as above pic shows, shade is grey, the white grid zone is 'Video wall display zone'.

B. Grid: Used for aligning the edge of matrix control interface, square size can be set by choosing 100, 50, 20 in the submenu on the upper right side of the page.

C. Log out: Click the closing button on the upper right side of 'Matrix control window' to log out.

D. Enable camera: When log in multiple matrices, click the frame of 'matrix control window' will change the color from white to orange. Now the 'Camera list' is matching to enabled matrix, other matrix matched list is hidden. Shown as fig 3.3:

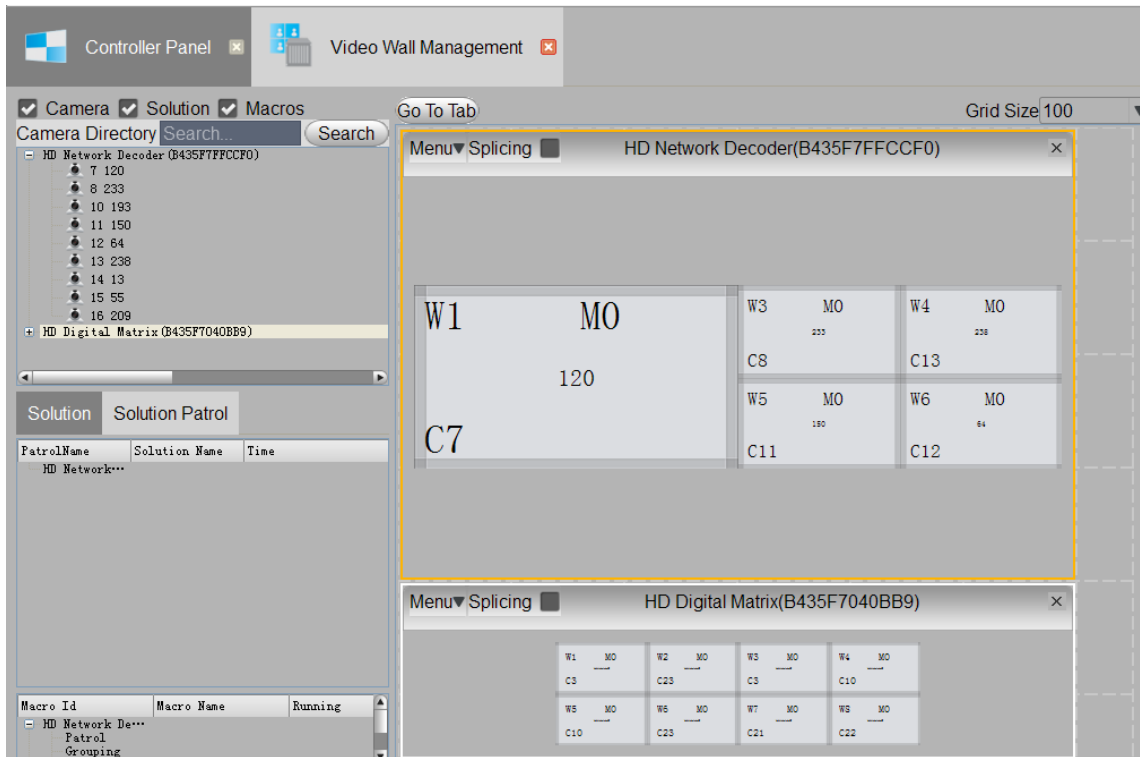


Fig 3.3 Camera list enable

The 'camera label' on the enabled matrix camera list can only be dragged to 'Matrix control window' which is orange, otherwise it will show 'Camera source is from invalid list'.

E. Go to tab: Click 'Go to tab' button to see multi tabs for each Video wall display zone, Video wall display zone can display single 'Matrix control window' each

F. Go to wall: Click “Go to wall” button, multi “matrix control window” will be shown in display wall as shown in picture below:

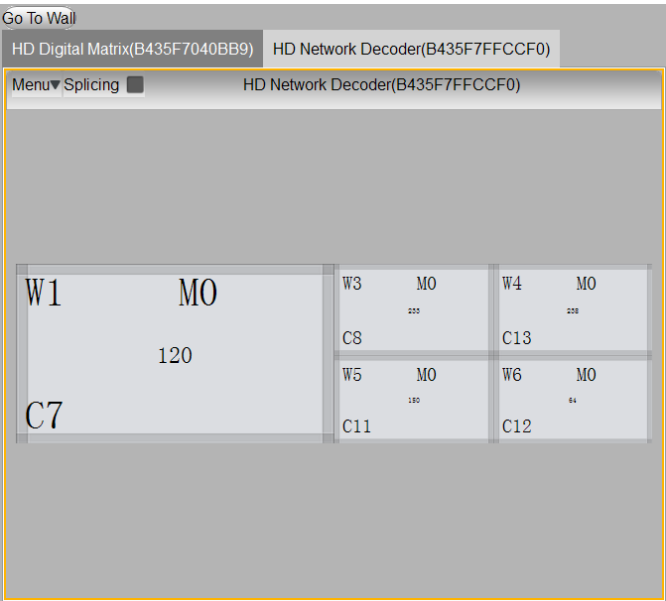


Fig 3.5 Go to wall

3.2 Macros number

“Macro List” shows available macro numbers, name and the current status of each macro number, as shown in fig 3.6:

Macro Id	Macro Name	Running
HD Network De...		
Patrol		
1	N/A	--
Grouping		
2	N/A	NO
4	N/A	NO
Segmentation		
3	N/A	NO
5	N/A	NO

Fig 3.6 Macro List

Macro No's: matrix switching configuration No., say, 1,2. Switching configuration includes Patrol, Group, Split.

Run or not: check current running status of switching configuration.

A. Patrol: Move your arrow to the 'Patrol' category, you will see tip as 'drag to window to run'. Use your mouse to drag macro No.3 to monitor No. 1 to start patrol function No.3 on Monitor No. 1.

B. Group: Double click macro No. 4 to run group switching plan No.4.

C. Split: Double click macro No. 1 to run splitting plan No. 3.

3.3 Solution patrol

The solution category stores including solution and solution patrol. Solution contains solution schemes, solution patrol contains group solution schemes.

The solution category stores solution number, names and description.

The solution patrol category contains patrol number, name and execute time.

A. Save solution: right click your mouse on 'Matrix Aliases' in the list such as 'HD network decoder', click 'save plan'. Input 'plan name' (unrepeatable) and 'plan description', click 'confirm', add solution scheme. You can add multi solution schemes. See fig 3.7:

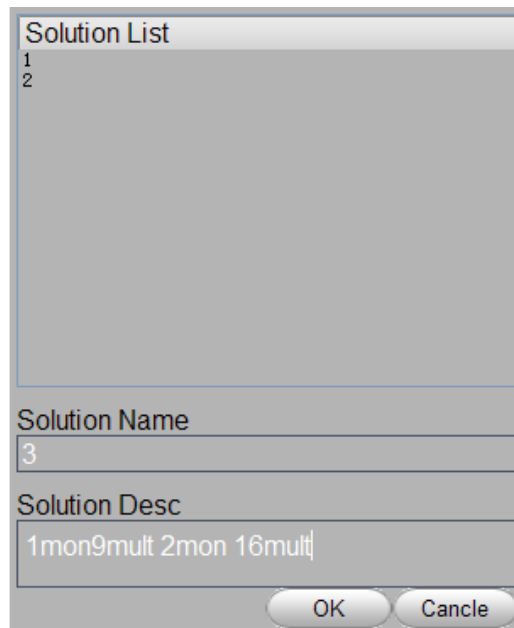


Fig 3.7 Stored plan

- B. Add solution group:** Right click your mouse on 'Matrix aliases' in the list such as 'HD network decoder', click 'add solution group'. Input 'group name' (unrepeatable) into the window, and choose scene and execute time in the plan list, click 'confirm' to add solution group scheme. See fig 3.8:

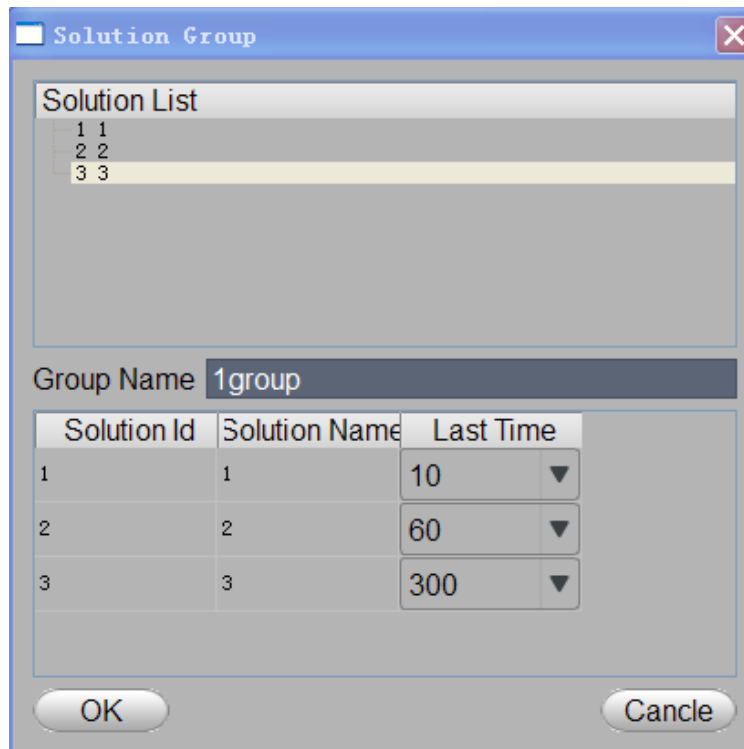


Fig 3.8 Add solution group

- C. Delete solution:** Right-click on the corresponding label of solution in the list and click "delete".

- D. Run solution:** Right click corresponding solution in the solution list, click 'Call' in the pop-up category.

- E. Solution patrol:** Select solution group in the solution patrol list and right click to " Call, Stop, Delete". Double click "Group" to realize group calling. Shown as below:

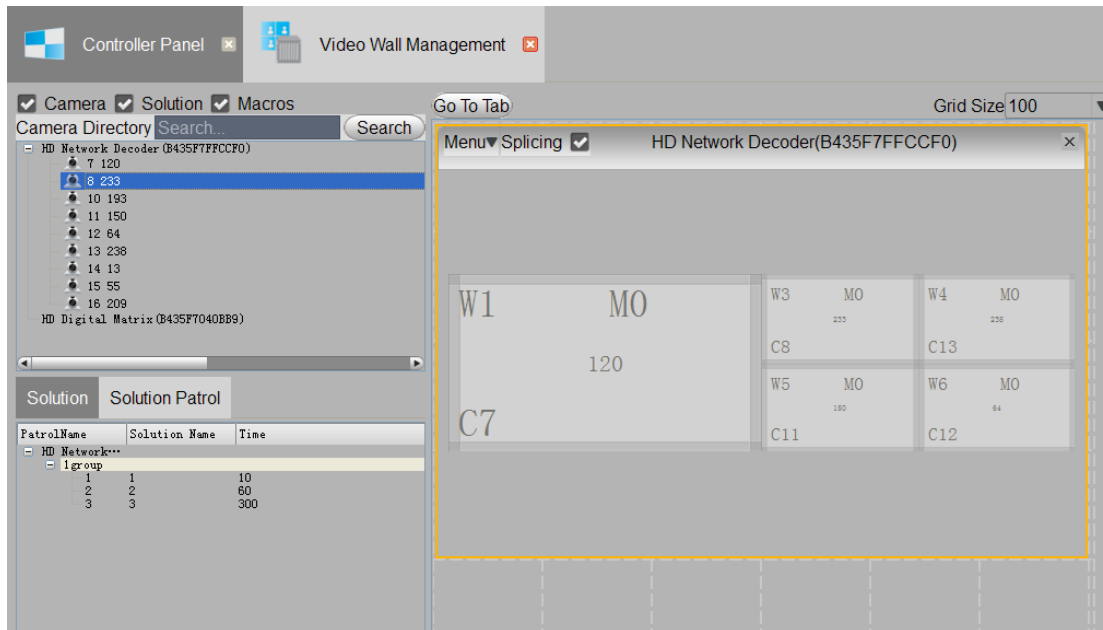


Fig 3.9 Solution Patrol

3.4 Matrix control operation

When there are multiple numbers of decoder. Or when client and keyboard control one decoder simultaneously, manually refreshing current client “matrix control window” is needed. Click “Menu” on the “matrix control window”, it will show as below. Click corresponding item to “update screen”, “update window”, etc. Shown in Fig 3.10 as below.

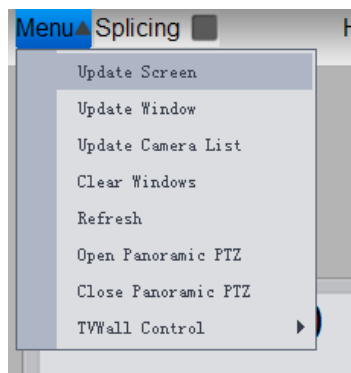


Fig 3.10 Menu operation

- A. update screen:** update screen information display
- B. update window:** update windows number, window configuration.
- C. Update camera list:** reload and show the camera list.
- D. Clear Windows:** reset the previous operation.
- E. Refresh:** refresh matrix control window.

F. Open panoramic PTZ: Open all PTZ controlling function

G. Close panoramic PTZ: Close all PTZ controlling function

PTZ controlling function: Open PTZ and PTZ control buttons, including cradle head, rate, focus, aperture will show up. Image from the window will do some action while click corresponding buttons.

3.5 Screen operation

Right-click on the display area when no window exists, and the shows the menu as below, segmentation and window adding can be set.

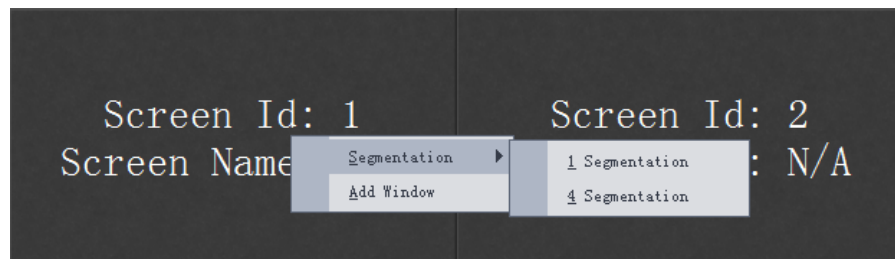


Fig 3.11 screen operation

A. Segmentation: on the current display area, 1 or 4 screens can be splitted out.

B. Add Window: Add a new window to the current display area.

3.6 Window operation

Right-click window and comes out a menu as fig 3.12 as below. It can delete window, open preview, show PTZ control, etc..

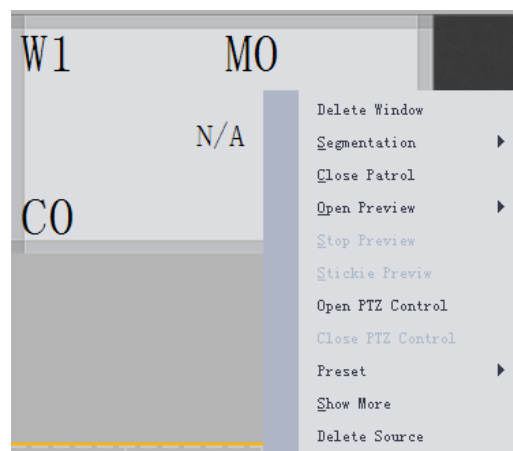


Fig 3.12 window operation

A. Delete window: remove the selected window.

B. Segmentation: divide the selected window into 1/4/9/16 images

- C. Close Patrol:** Close patrol and switch plan
 - D. Open Preview:** preview current video in main bit stream or sub bit stream.
 - E. Close preview:** exit preview.
 - F. Stick preview:** Amplify the image to preview.
 - G. Open PTZ control:** shows PTZ control panel on the window. Buttons and icons will show up when mouse moves there.
 - H. Close PTZ control:** Close PTZ control
 - I. Preset:** Set, delete, and call the preset of PTZ.
 - J. Show More:** check the window No., content, coordinate position information, access parameter, video parameter.
 - K. Delete source:** Delete camera source of current window.
 - L. Select window:** Select window
- Adsorption operation:** choose one window and drag it to the edge of the monitor, screen adsorption can be realized. Shown as below.

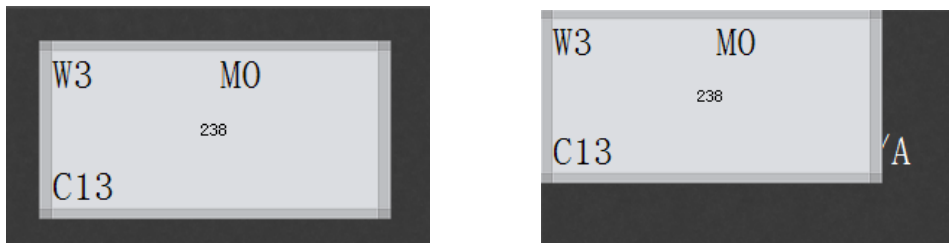


Fig 3.13 adsorption operation

NOTE:

The following features require customized connections to NVR or DVR via SDK.
Please consult your sales person for compatible devices and available options.

4. Video preview

Video preview can realize real-time video preview, PTZ control, etc.

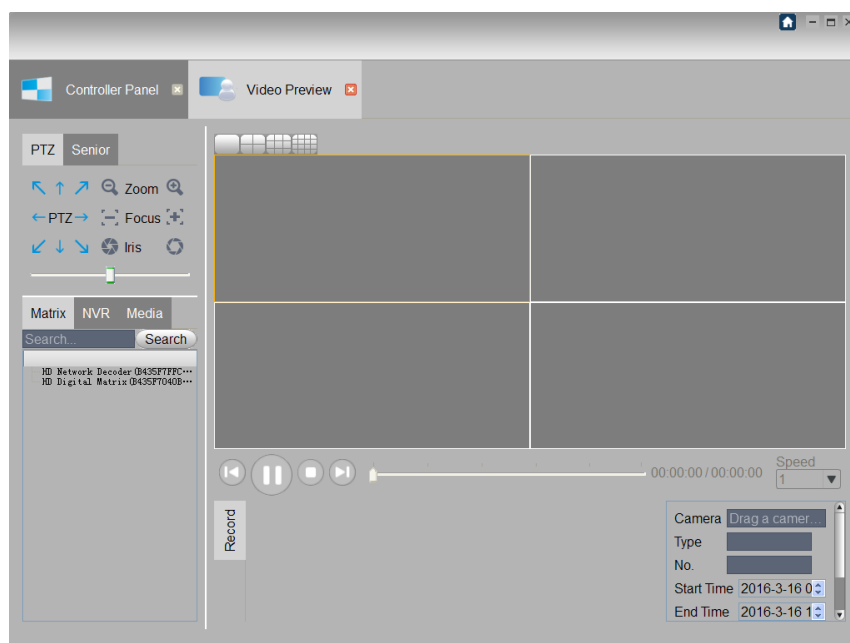


Fig 4.1 video preview

4.1 Real-time play

Select one matrix in the “matrix” tab on the left, and right-click to “log in”. Camera list will show up after success login. Drag the camera (stream media access) from camera list to the right window, local real-time play can be realized. As shown in Fig 4.2.

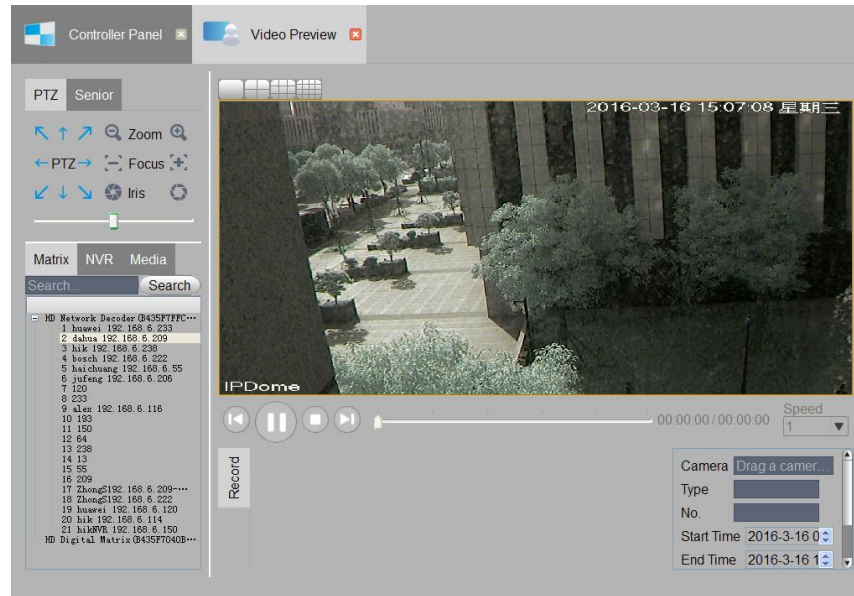


Fig 4.2 Live play

- A. Display on the Video Wall:** Right-click the video and choose “Display on the TV Wall”, and input Win Nos in the “Window ID”, say , “1”. As showing in Fig 4.3.

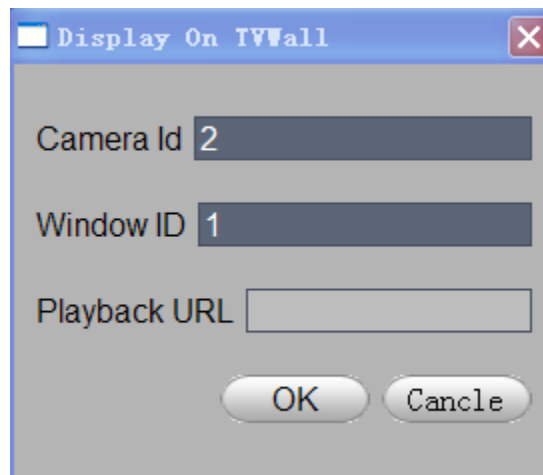


Fig 4.3 Display on TVWall

- B. Close live:** right click the video you want to stop and choose “Close live”.

4.2 Video search and playback

A. Search for video: While logging in matrix successfully, Drag a source of video that supports video search and playback to the edit box with the name of “Drag a camera”. Select the “Start Time”, “End Time” and “file type”. Click “Search”, and the video will show up in the “video” list. See Fig 4.4 as below.

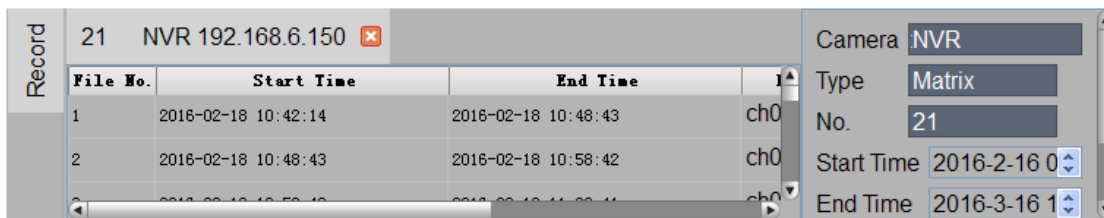


Fig 4.4 Search for video

B. Video play: Select the window, and double-click the video file that is needed to play, and the video will be shown in the window.

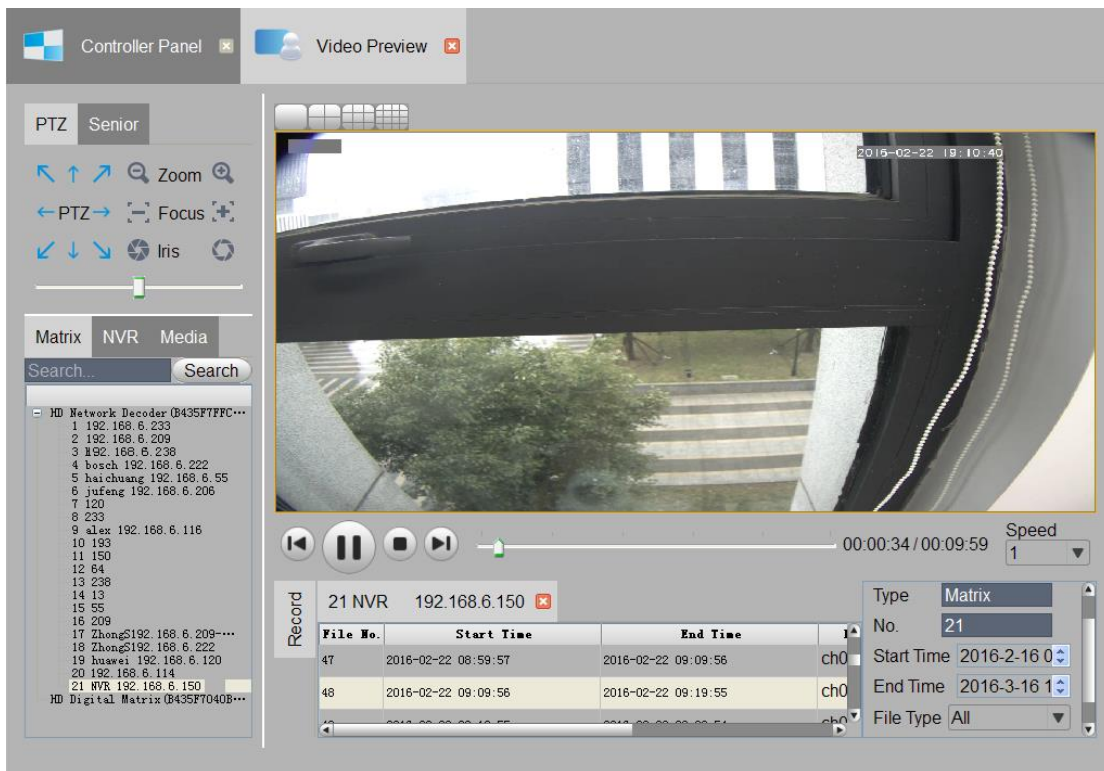


Fig 4.5 video playback

C. Stop playback: Click the stop button on the video control panel or right click to choose “stop playback”.

D. Pause playback: click the pause button on the video control panel.

E. Previous/Next: Click previous/next button to play previous/next recorded video

G. Progress adjustment: Drag the progress bar to realize quick locating and playing.

H. Speed: you can choose different value to speed up (value greater than 1) or slow down (value less than 1).

I. Clear video list: Click “Clear” to clear (not delete) video file from video list.

J. Video display on the wall: Right click the video and choose “Display on Video Wall”.

For any additional questions please contact our Technical support department at 469-635-6820 Monday through Friday 8:00 AM -5:00 PM CST.

Note: The information supplied in this manual is subject to change without prior notice.