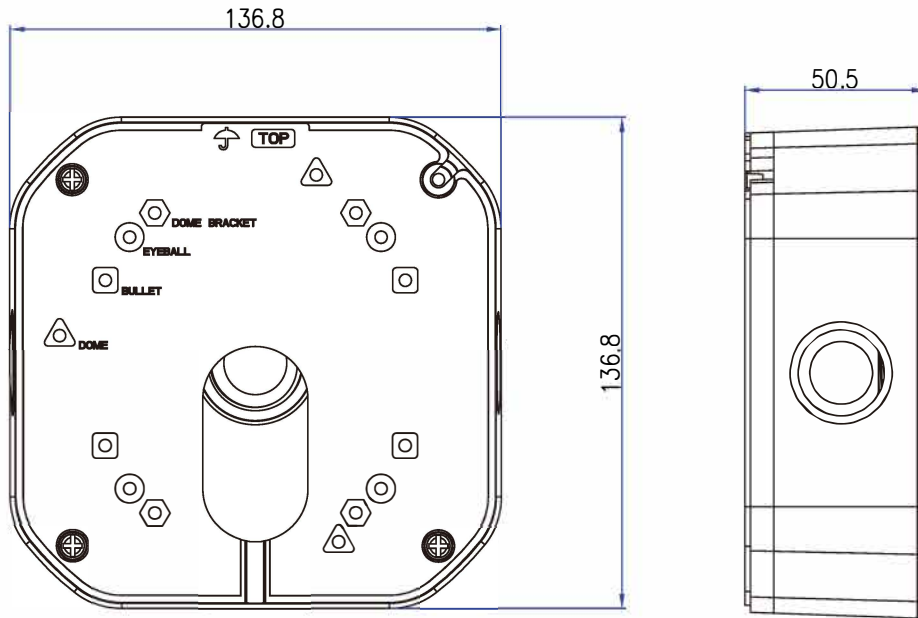
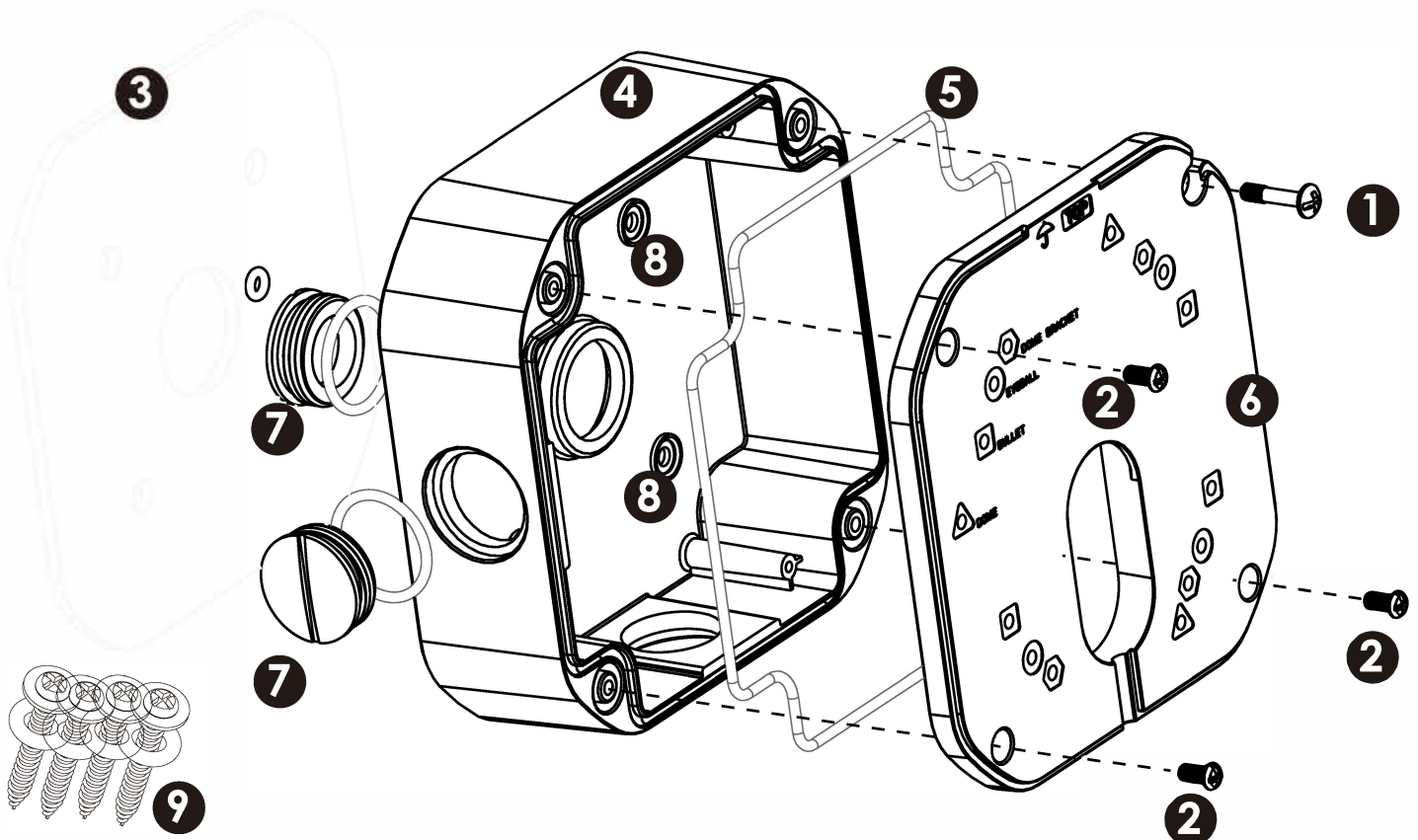


# CDJBS10 Junction Box

## MEASUREMENTS



## PRODUCT BREAKDOWN



1 Hinge Screw

2 Fixing Screws

3 EVA Base Seal

4 Base

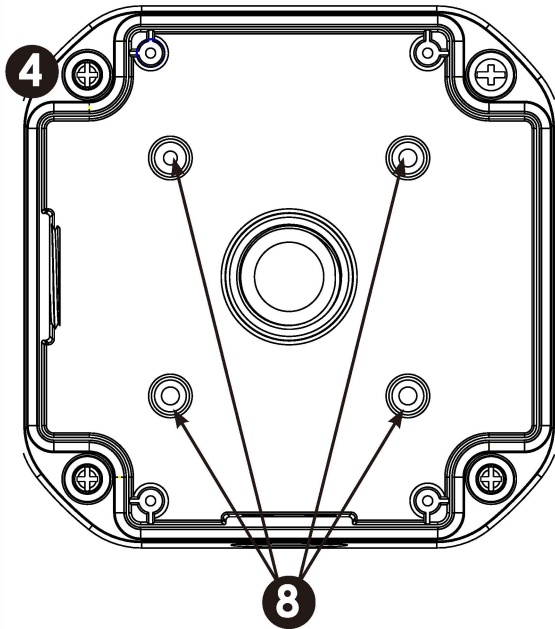
5 Rubber Seal

6 Multi Fitting Cover Plate

7 Conduit Seal Caps 3/4"-14 NPS

8 Base Attachment Holes

# INSTALLATION GUIDE



**A**

- Remove cover **6** by removing the three **2** screws.
- Screw **1** allows hinged movement can loosen until you can simply just take off the cover plate.
- If using side conduit ensure **7** cap is fitted to rear of base to make rear water tight.
- Attach **3** 3M sticker to rear of base **4**, then attach base to surface using the hole positions as shown as **8**, use the four **9** screws as supplied. Be sure the rubber washer is attached to assure waterproof attachment.

**B**

- Reverse side of cover plate **6** remove the four screws, to open front cable feed gap.
- Now attach camera to front of plate. Each position on the plate has a different shape image. All cameras fit center of the junction box when correctly installed.

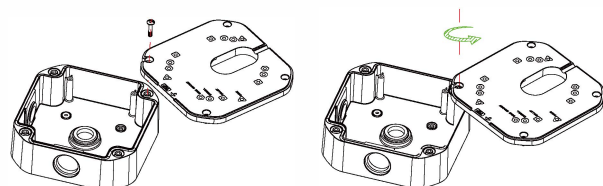
Note: The top of plate position is always to face north, also plate camera screw holes are recessed and do not enter inside the junction box, do not try use incorrect fitting screws which break the plate as will void the weather proof on the product.

- Now reconnect the plate as from step b. Make sure of the rubber seal used is in position.

Now you should have a attached camera to the front plate

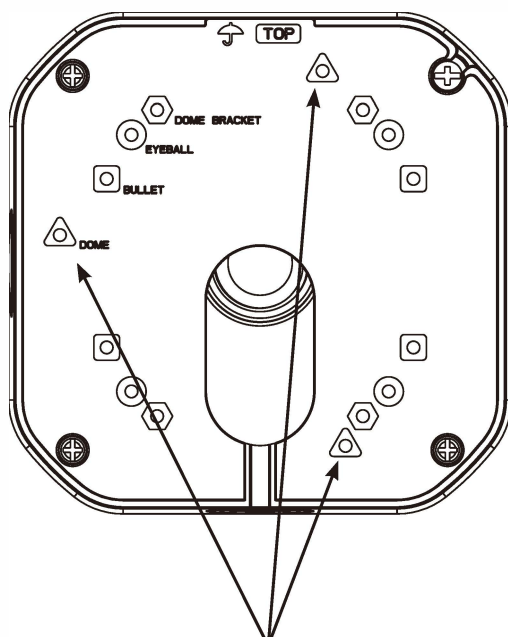
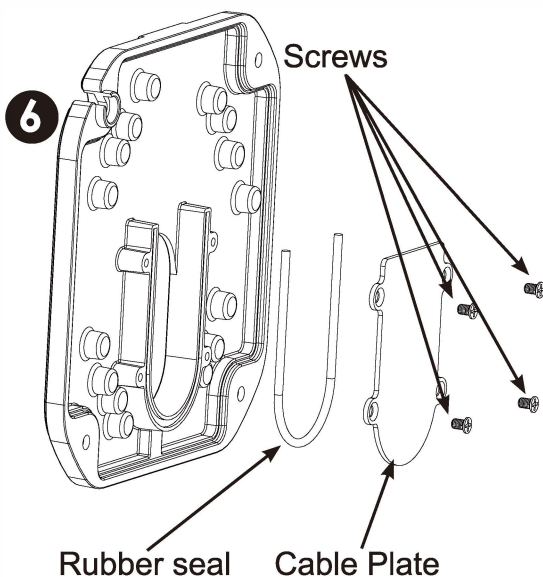
**C**

- Attach cover plate to base using only the hinge screw **1**. So can have a swinging camera attached to the junction box, to enable hands to connect cables.



- Attach cables for analogue or IP products and locate inside the junction box.

- Complete installation be sure rubber seal **5** is inside and not pinched when reconnecting the **2** screws.



Note: Shapes match each model type