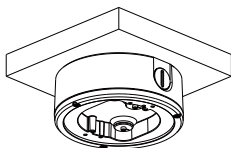


INSTALLATION MANUAL

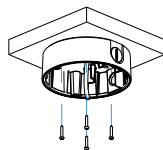


This manual is intended for users of the junction box. It includes instructions for mounting the junction box to a wall.

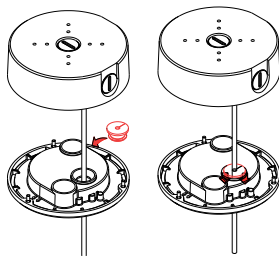
- ✓ • **This junction box is intended to be used with some models of cameras. Do not use it with other models of cameras.**
- **This installation should be performed by a qualified service personnel in conformance to all local codes.**
- **You may need to reinforce the wall. If the wall is not strong enough to support the camera, the camera may fall.**
- **Do not use this product for other purposes.**
- **Follow the method of Mounting A or B depending on your camera model.**

Mounting A

- 1 Mount the bracket to the wall by using the screws.
- 2 Insert cables from external devices, network and power adapter.
- 3 Pass the cable through the top cover, insert the waterproof bushing provided with the product into the cable and insert it into the top cover hole as the figure.



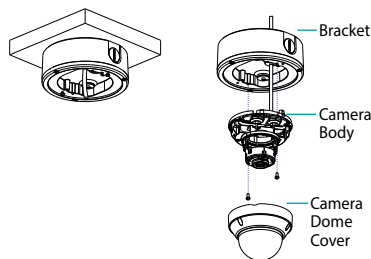
- ✓ • Cable diameters that can be fastened to the bushing are 4-6mm(0.15"-0.23"), and other sizes require a separate sealing finish.
- Bushings that do not tighten cables and unused holes require a separate sealing finish.



- 4 Fasten the top cover and the body.
- 5 Connect the cable to the camera and screw the camera onto the top cover.

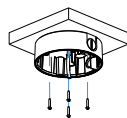
- ✓ If the cable is bent too much when the camera is installed, a separate sealing finish is required as the waterproof function may be weakened.

- 6 Screw the camera dome cover onto the camera body using the Allen wrench provided with the product.
- 7 Turn on power.

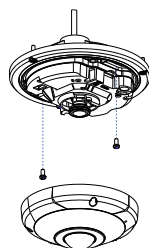


Mounting B

- 1 Mount the bracket to the wall by using the screws.
- 2 Insert cables from external devices, network and power adapter.



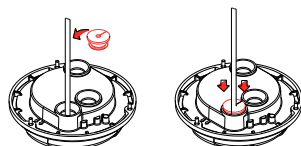
- 3 Pass the cable through the top cover and then fasten the camera to the top cover.
- 4 Screw the camera top cover onto the camera body using the Allen wrench provided with the product.



- 5 Insert the waterproof bushing provided with the product into the cable and insert it into the top cover hole as the figure.

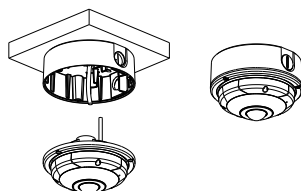


- Cable diameters that can be fastened to the bushing are 4-6mm(0.15"-0.23"), and other sizes require a separate sealing finish.
- If the cable is bent excessively when tightening the bushing, the waterproofing function may be weakened.
- Bushings that do not tighten cables and unused holes require a separate sealing finish.



- 6 Connect the cables and fix the top cover to the bracket.

- 7 Turn on power.



Connect your specific model of camera to the bracket as follows:



Check the screw number and points first before connecting your camera.

Screw No.1 (2-point): use 2 screws

Screw No.2 (2-point): use 2 screws

Screw No.3 (3-point): u2 screws

Dimensions

Unit: mm (inch)

