

700 TVL Analog Micro Fixed Vandal Dome



Description:

The CDC3724V micro dome camera provides high quality video with 700 TV Lines of resolution. The super wide 2.4 mm fixed lens provides a 90° field of view and the day/night technology ensures high-resolution in low light areas. The IP66 weatherproof rating and compact size makes this micro camera an ideal choice for applications such as drive-thru lanes, customer service counters and many others.

Features:

- 700 TV Lines of resolution
- 2.4 mm fixed lens for a 90° field of view
- 1/3" Sony Super HAD II image sensor
- True day/night for low light areas
- Compact size of 2.44" x 3.15"
- Three-axis gimbal mounting options
- Weatherproof IP66 rated
- DC12V



CDC3724V Specifications

Model	Lens (mm)	Resolution
CDC3724V	2.4 mm	700 TVL

Power

Source	DC12V
Consumption	1.5 Watt

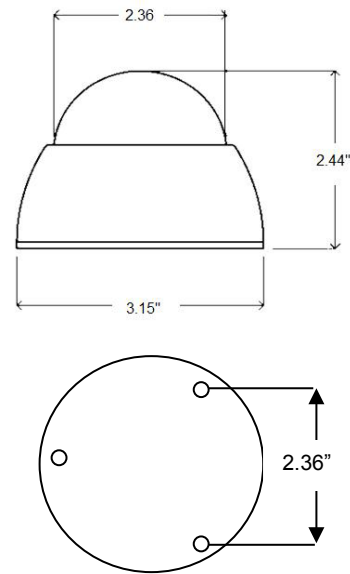
Sensor

Image Sensor	1/3" Sony Super HAD II
Lens	2.4 mm fixed lens
Minimum Illumination	0.1 Lux (Sens-up On)
Horizontal Resolution	700 TV Lines
TV System	NTSC
Total Pixels	976 (H) x 494 (V)
Scanning Frequency	15.73 (H) x 59.94 (V) Hz
Electronic Shutter	1/60 ~ 1/100,000
S/N Ratio	> 52 dB (AGC Off)
Video Output	Composite Video 1.0Vp-p/75Ω
Day/Night	Yes; Auto

General Information

Temperature	14°F to 122°F (-10°C to 50°C)
Humidity	0~85% non-condensing
Weight	0.88 lbs. (400 g)
Dimensions (h x Ø)	2.44" x 3.15" (61.98 x 80.0 mm)

Dimensions



Costar
VIDEO SYSTEMS

101 Wrangler, Suite 201 • Coppell, Texas 75019 • Phone: 469-635-6800 • Fax: 469-635-6822 • Toll Free: 1-888-694-STAR (7827)

www.costarvideo.com

Specifications and design are subject to change without notice. Conversions: 1" = 25.4mm Measurement conversions are approximate.