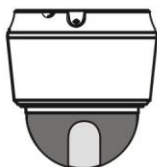


# NETWORK CAMERA

## Quick Reference Guide





**WARNING**

**RISK OF ELECTRIC SHOCK  
DO NOT OPEN**

**WARNING:** TO REDUCE THE RISK OF ELECTRIC SHOCK,  
DO NOT REMOVE COVER (OR BACK).  
NO USER-SERVICEABLE PARTS INSIDE.  
REFER SERVICING TO QUALIFIED  
SERVICE PERSONNEL.

**COMPLIANCE NOTICE OF FCC:**

THIS EQUIPMENT HAS BEEN TESTED AND FOUND TO COMPLY WITH THE LIMITS FOR A CLASS A DIGITAL DEVICE, PURSUANT TO PART 15 OF THE FCC RULES. THESE LIMITS ARE DESIGNED TO PROVIDE REASONABLE PROTECTION AGAINST HARMFUL INTERFERENCE WHEN THE EQUIPMENT IS OPERATED IN A COMMERCIAL ENVIRONMENT. THIS EQUIPMENT GENERATES, USES, AND CAN RADIATE RADIO FREQUENCY ENERGY AND IF NOT INSTALLED AND USED IN ACCORDANCE WITH THE INSTRUCTION MANUAL, MAY CAUSE HARMFUL INTERFERENCE TO RADIO COMMUNICATIONS. OPERATION OF THIS EQUIPMENT IN A RESIDENTIAL AREA IS LIKELY TO CAUSE HARMFUL INTERFERENCE, IN WHICH CASE USERS WILL BE REQUIRED TO CORRECT THE INTERFERENCE AT THEIR OWN EXPENSE.

**WARNING:** CHANGES OR MODIFICATIONS NOT EXPRESSLY APPROVED BY THE PARTY RESPONSIBLE FOR COMPLIANCE COULD VOID THE USER'S AUTHORITY TO OPERATE THE EQUIPMENT.

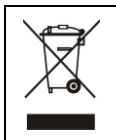
THIS CLASS OF DIGITAL APPARATUS MEETS ALL REQUIREMENTS OF THE CANADIAN INTERFERENCE-CAUSING EQUIPMENT REGULATIONS.

The information in this manual is believed to be accurate as of the date of publication. We are not responsible for any problems resulting from the use thereof. The information contained herein is subject to change without notice. Revisions or new editions to this publication may be issued to incorporate such changes.

The software included in this product contains some Open Sources. You may obtain the complete corresponding source code from us. See the Open Source Guide on the software CD (OpenSourceGuide\OpenSourceGuide.pdf) or as a printed document included along with the User's Manual.

**WEEE (Waste Electrical & Electronic Equipment)****Correct Disposal of This Product**

**(Applicable in the European Union and other European countries with separate collection systems)**



This marking shown on the product or its literature, indicates that it should not be disposed with other household wastes at the end of its working life. To prevent possible harm to the environment or human health from uncontrolled waste disposal, please separate this from other types of wastes and recycle it responsibly to promote the sustainable reuse of material resources.

Household users should contact either the retailer where they purchased this product, or their local government office, for details of where and how they can take this item for environmentally safe recycling.

Business users should contact their supplier and check the terms and conditions of the purchase contract. This product should not be mixed with other commercial wastes for disposal.

## Important Safeguards

### 1. Read Instructions

All the safety and operating instructions should be read before the appliance is operated.

### 2. Retain Instructions

The safety and operating instructions should be retained for future reference.

### 3. Cleaning

Unplug this equipment from the wall outlet before cleaning it. Do not use liquid aerosol cleaners. Use a damp soft cloth for cleaning.

### 4. Attachments

Never add any attachments and/or equipment without the approval of the manufacturer as such additions may result in the risk of fire, electric shock or other personal injury.

### 5. Water and/or Moisture

Do not use this equipment near water or in contact with water.

### 6. Placing and Accessories

Do not place this equipment on an wall or ceiling that is not strong enough to sustain the camera. The equipment may fall, causing serious injury to a child or adult, and serious damage to the equipment. Wall or shelf mounting should follow the manufacturer's instructions, and should use a mounting kit approved by the manufacturer.



This equipment and cart combination should be moved with care. Quick stops, excessive force, and uneven surfaces may cause the equipment and cart combination to overturn.

Do not place this equipment in an enclosed space. Sufficient ventilation is required to prevent an increase in ambient temperature which can cause malfunction or the risk of fire.

### 7. Power Sources

This equipment should be operated only from the type of power source indicated on the marking label. If you are not sure of the type of power, please consult your equipment dealer or local power company.

You may want to install a UPS (Uninterruptible Power Supply) system for safe operation in order to prevent damage caused by an unexpected power stoppage. Any questions concerning UPS, consult your UPS retailer.

### 8. Power Cord

Operator or installer must remove power and TNT connections before handling the equipment.

### 9. Lightning

For added protection for this equipment during a lightning storm, or when it is left unattended and unused for long periods of time, unplug it from the wall outlet and disconnect the antenna or cable system. This will prevent damage to the equipment due to lightning and power-line surges. If thunder or lightning is common where the equipment is installed, use a surge protection device.

### 10. Overloading

Do not overload wall outlets and extension cords as this can result in the risk of fire or electric shock.

### 11. Objects and Liquids

Never push objects of any kind through openings of this equipment as they may touch dangerous voltage points or short out parts that could result in a fire or electric shock. Never spill liquid of any kind on the equipment.

### 12. Servicing

Do not attempt to service this equipment yourself. Refer all servicing to qualified service personnel.

### 13. Damage requiring Service

Unplug this equipment from the wall outlet and refer servicing to qualified service personnel under the following conditions:

- A. When the power-supply cord or the plug has been damaged.
- B. If liquid is spilled, or objects have hit the equipment.
- C. If the equipment has been exposed to rain or water.
- D. If the equipment does not operate normally by following the operating instructions, adjust only those controls that are covered by the operating instructions as an improper adjustment of other controls may result in damage and will often require extensive work by a qualified technician to restore the equipment to its normal operation.
- E. If the equipment has been dropped, or the cabinet damaged.
- F. When the equipment exhibits a distinct change in performance — this indicates a need for service.

### 14. Replacement Parts

When replacement parts are required, be sure the service technician has used replacement parts specified by the manufacturer or that have the same characteristics as the original part. Unauthorized substitutions may result in fire, electric shock or other hazards.

### 15. Safety Check

Upon completion of any service or repairs to this equipment, ask the service technician to perform safety checks to determine that the equipment is in proper operating condition.

### 16. Field Installation

This installation should be made by a qualified service person and should conform to all local codes.

### 17. Correct Batteries

Warning: Risk of explosion if battery is replaced by an incorrect type. Dispose of used batteries according to the instructions.

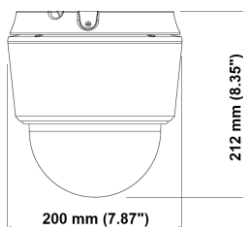
### 18. Tmra

A manufacturer's maximum recommended ambient temperature (Tmra) for the equipment must be specified so that the customer and installer may determine a suitable maximum operating environment for the equipment.

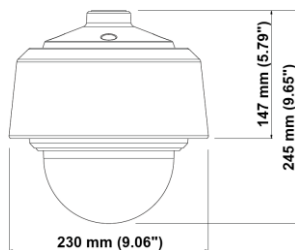
## Package Contents

- Network Camera
- Installation CD (INIT/iNEX Basic software and User's Manuals)
- Quick Reference Guide (This Document)
- Mount Kits

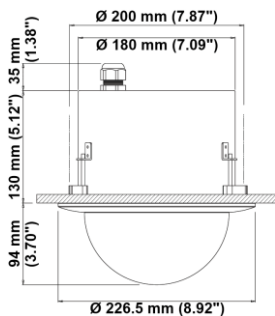
## Dimensions



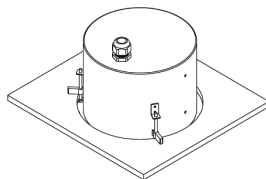
Indoor



Outdoor



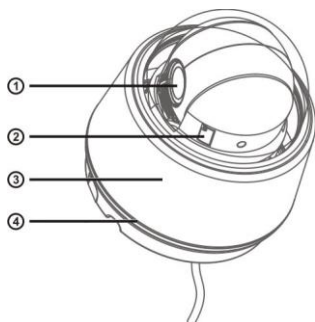
Flushed



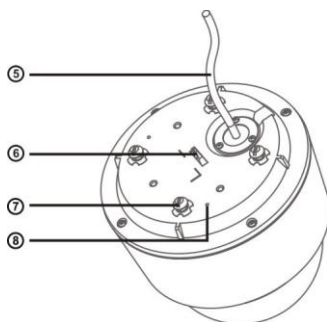
## Illustrated Parts List

### Indoor and Outdoor

< Body >

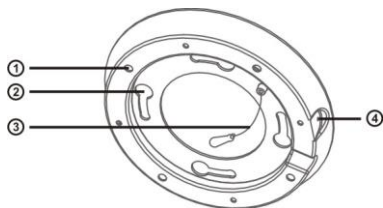


< Body – Bottom Side View >



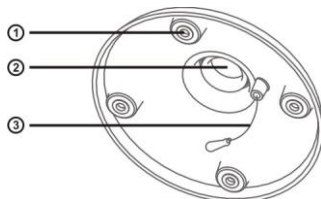
- |                                     |                       |                    |
|-------------------------------------|-----------------------|--------------------|
| ① Lens                              | ② SD Memory Card Slot | ③ Dome Cover       |
| ④ Waterproof Sealing (black rubber) | ⑤ Cable               | ⑥ Safety Wire Ring |
| ⑦ Install Screw                     | ⑧ M3 Screw Hole       |                    |

< Indoor Bracket >

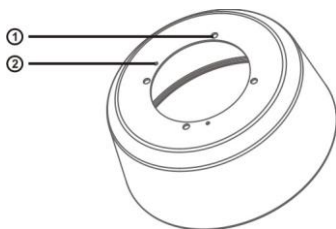


- |                              |
|------------------------------|
| ① Wall/Ceiling Mounting Hole |
| ② Install Screw Hole         |
| ③ Safety Wire                |
| ④ M4 Screw Hole              |

< Outdoor Bracket\* >



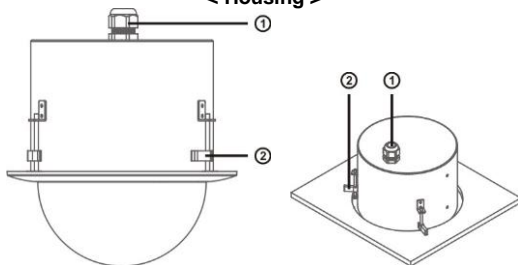
- |                 |
|-----------------|
| ① M5 Screw Hole |
| ② Pipe Hole     |
| ③ Safety Wire   |

**< Outdoor Sun Shield\* >**

① M5 Screw Hole


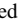
② M3 Screw Hole

\* The outdoor bracket and sun shield are purchased separately. Ask your dealer or distributor about purchasing it.

**Flushed****< Housing >**

① Cable Grand

② Mounting Clamp

- **Lens:** Optical zoom lens is installed.
- **Dome Cover:** It protects the inner parts of the camera.
- **Waterproof Sealing:** It resists the ingress of water.
- **SD Memory Card Slot:** Insert a SD memory card (SLC (Single Level Cell) or MLC (Multi Level Cell) types of SanDisk or Transcend brands recommended). It is required that you remove the dome cover to remove or insert a SD memory card. Make sure that the waterproof sealing is joined properly when reconnecting the dome cover; otherwise, the IP66 level is not guaranteed.
- **Install Screw, Install Screw Hole:** When installing an indoor camera, it connects the body to the indoor bracket.
- **M4 Screw Hole:** When installing an indoor camera, it fastens the body to the indoor bracket.
- **Safety Wire, Safety Wire Ring:** Allows you to connect the body to a bracket or a bracket to the body. It prevents the body or a bracket from falling when you separate the body from a bracket or a bracket from the body.  (frame ground) is marked beside the safety wire screw hole of the indoor bracket. When fastening the camera body to the indoor bracket, ground the camera by using the grounding clip provided with the camera. It is recommended that you use the camera after grounding it.
- **Cable Assembly:** See below.
- **Wall/Ceiling Mounting Holes:** Allows you to screw the camera to the wall or ceiling.
- **M5 Screw Hole:** When installing an outdoor camera, it connects the outdoor bracket to the sun shield.
- **M3 Screw Hole:** When installing an outdoor camera, it fastens the sun shield to the camera body by using the M3 screw provided with the camera.  (frame ground) is marked beside the M3 screw hole of the camera body. When fastening the camera body to the indoor bracket, ground the camera by using the grounding clip provided with the camera. It is recommended that you use the camera after grounding it.
- **Pipe Hole:** When installing an outdoor camera, it fastens the pipe, which the cable assembly goes through, to the outdoor bracket.
- **Cable Grand:** Allows you to feed wires and cables for connection to power, devices, and Ethernet.
- **Mounting Clamp:** Allows you to fasten the camera to the ceiling.

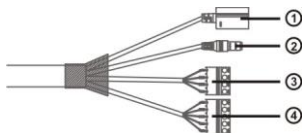
## CAUTIONS:

- **Make sure that the waterproof sealing is screwed to the dome cover tightly when reconnecting the dome cover after removing it to remove or insert a SD memory card or perform a factory reset. If the waterproof sealing is not joined to the dome cover properly, the IP66 level is not guaranteed. Ask your dealer or distributor for details.**
- **Do NOT remove the SD memory card while the unit is operating; otherwise, the system might not operate properly and recorded data saved on it might be damaged.**
- **SD memory cards are expendable supplies. After a certain use in time, partial memory sectors can be damaged and recording may not be available or data will be lost. Check the SD memory card periodically and replace it with a new one if necessary.**



- microSD Logo is a trademark of SD-3C, LLC. 

## Cable



- ① Network Port
- ② Power
- ③ Alarm In/Out
- ④ Audio In/Out, Video Out

- **Network Port:** Connect a Cat5 cable with an RJ-45 connector. You can change the settings, manage the camera, upgrade the software or monitor video remotely via the network connection. Refer to the INIT User's Manual for details about network connection setup. When using a PoE switch, the camera can be supplied with power over Ethernet cable (Refer to the PoE switch manufacturer's manual for details).
- **Power:** Connect the power adapter.
- **Alarm In/Out**
  - **ALI:** Connect an alarm-in device. Mechanical or electrical switches can be wired to the IN and GND (Ground) connectors. The voltage range is from 0V to 5V. When the electrical switch is wired, the threshold voltage for NC (Normally Closed) is above 4.3V and for NO (Normally Open) is below 0.3V, and it should be stable at least 0.5 seconds to be detected.
  - **NO:** Connect an alarm-out device to the NO (Normally Open) and COM (Common) connectors. NO is a relay output which sinks 0.3A @ 125 VAC and 1A @ 30 VDC.
- **Audio In/Out**
  - **L\_I:** Connect to an audio source (Line-in).
  - **L\_O:** Connect to an amplifier (Line-out). The camera does not have amplified audio output, so you will need a speaker with an amplifier.
- **Video Out**
  - **V\_O, GND:** Connect two wires from the cable to the camera and the other connector from the cable to a monitor. This is intended for video preview while adjusting the camera. Configure the video signal (NTSC or PAL) for video output in Remote Setup (Video – Camera menu > Miscellaneous tab).

**NOTE:** Camera and audio surveillance may be prohibited by laws that vary by region. Check the laws in your area before using this product for surveillance purposes.

### CAUTIONS:

- **The camera restarts after the power adaptor is disconnected from the camera when switching the power source from 12 VDC to PoE.**
- **The network connector is not designed to be connected directly with cable or wire intended for outdoor use.**

**WARNING: ROUTE POWER CORDS SO THAT THEY ARE NOT A TRIPPING HAZARD. MAKE CERTAIN THE POWER CORD WILL NOT BE PINCHED OR ABRADED BY FURNITURE. DO NOT INSTALL POWER CORDS UNDER RUGS OR CARPET. USE THE POWER CORD THAT HAS A GROUNDING PIN. IF YOUR POWER OUTLET DOES NOT HAVE A GROUNDING PIN RECEPTACLE, DO NOT MODIFY THE PLUG. DO NOT OVERLOAD THE CIRCUIT BY PLUGGING TOO MANY DEVICES INTO ONE CIRCUIT.**

## Factory Reset

This will only be used on the rare occasions that you want to return all the settings to the original factory settings.

**NOTE:** The factory reset switch is inside of the camera. Ask your dealer or distributor for details.

**CAUTION: When performing a Factory Reset, you will lose any settings you have saved.**

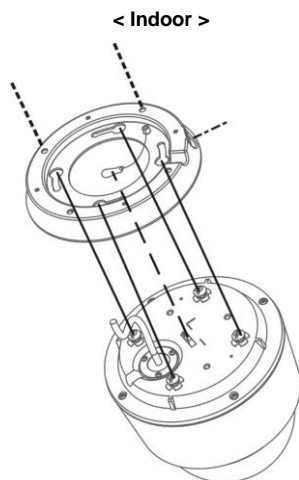
Cut off the power from the camera → Remove the dome cover and poke a straightened paperclip into the factory reset switch hole. → Turn on the power while holding the reset switch → Release the switch in about 5 seconds after the power is applied → The camera resets to factory defaults and restarts after completing the factory reset → Reconnect the dome cover.

**CAUTION: Make sure that the waterproof sealing is joined properly when reconnecting the dome cover; otherwise, the IP66 level is not guaranteed.**

You can perform a factory reset while the camera is turned on by pressing the factory reset switch and releasing the reset switch. A factory reset also can be performed remotely by running the INIT program. The camera restarts after completing the factory reset. Refer to the INIT User's Manual for details on remote factory resetting.

## Mounting

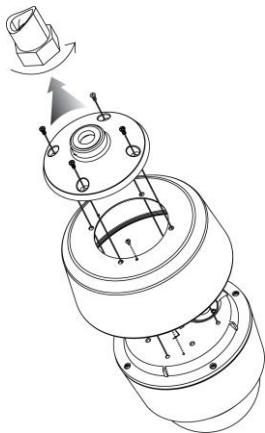
**WARNING:** You might need to reinforce the wall or ceiling. If the wall or ceiling is not strong enough to support the camera, the camera might fall damaging the camera or causing injuries.



1. Screw the indoor bracket to the wall or ceiling by using the wall/ceiling mounting screws provided with the camera.
2. Make a cable hole in the wall or ceiling.
3. Hook the safety wire of the bracket on the safety wire ring of the camera body.
4. Connect the external devices, network and power adapter.
5. Connect the camera body to the indoor bracket. Fix the install screws of the camera body up to the install screw holes of the bracket and turn the camera body 25 degrees clockwise.
6. Fasten the camera body to the bracket by tightening the M4 screw provided with the camera to the M4 screw hole of the bracket.
7. Apply power.

### < Outdoor >

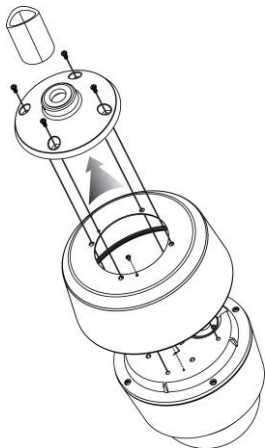
1. Remove the install screw from the camera body.
  2. Screw the sun shield to the camera body by using the M3 screws provided with the camera.
- In case that a universal nut is attached to a pipe, connect the sun shield and outdoor bracket first, then connect it to the pipe as follows:



3. Hook the safety wire of the outdoor bracket on the safety wire ring of the camera body.
4. Screw the outdoor bracket to the sun shield by using the M5 screws provided with the camera.
5. Connect the cable from the camera to the pipe.
6. Connect the camera to the pipe by turning the universal nut.
7. Connect the external devices, network and power adapter.
8. Apply power.

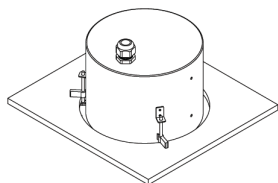
**CAUTION: Do not turn the camera but turn the universal nut when connecting the camera to the pipe, otherwise, the cable will be twisted.**

- In case that a universal nut is not attached to a pipe, connect the outdoor bracket to the pipe first, then connect the sun shield to the outdoor bracket as follows:



3. Assemble the outdoor bracket to the pipe by turning the outdoor bracket.
4. Hook the safety wire of the outdoor bracket on the safety wire ring of the camera body.
5. Connect the cable from the camera to the pipe.
6. Screw the sun shield to the outdoor bracket by using the M5 screws provided with the camera.
7. Connect the external devices, network and power adapter.
8. Apply power.

## &lt; Flushed &gt;



The camera is mounted in the housing.

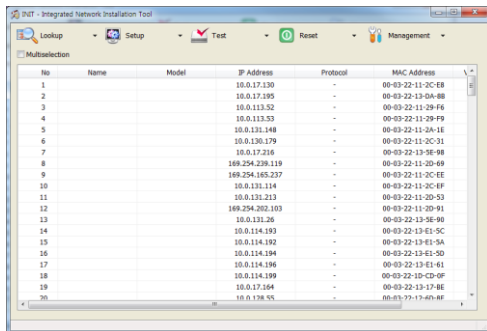
1. Remove the ceiling tile from the ceiling. Draw circle whose diameter is 7.87" (200 mm) on the tile. Cut the circle out of the ceiling tile.
2. Connect the external devices, network and power adapter.
3. Remove the housing dome cover from the housing can by turning the housing dome cover counterclockwise.
4. Insert the housing into the ceiling and turn the screws of three clamps clockwise. The clamps are laid over the ceiling tile and the housing is held in the ceiling.
5. Connect the housing dome cover to the housing can by turning the housing dome cover clockwise.
6. Apply power.

**NOTE:** The ceiling tile cannot be thicker than 1.3" (35mm).

## Running Installation Program (INIT)

The INIT (Integrated Network Installation Tool) program is provided with the product for connection to the product. You can connect to the product remotely via Ethernet to change its settings and manage it. Run the INIT program as follows.

1. Insert the program CD.
2. Run the INIT program by double clicking the INIT.exe file in the INIT folder.
3. Set the language option. You can change the language option after running the program.
4. The following Main screen appears, and you can connect to the camera and change its settings. Selecting the Multiselection option allows you to select multiple network devices and change their settings at the same time (The same model only). See the INIT User's Manual on the CD for details about each function.



**NOTES:**

- Do not change the IP address of your computer manually while running the INIT program. If you do, the network connection between the network device and your computer might be cut off.
- This product includes software developed by the OpenSSL Project for use in the OpenSSL Toolkit (<http://www.openssl.org/>)

## Connecting to Network Camera

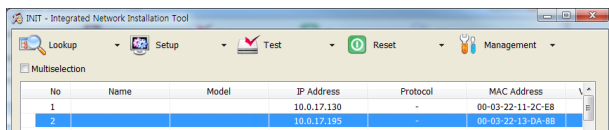
### Connecting from Local PC

The network camera is set to be automatically assigned a temporary IP address from a DHCP server by default. If there is no DHCP server, the IP address is set to 169.254.x.x. It allows you to connect to the network camera without additional installation procedure.

1. Run the INIT program on the local PC.
2. Click the Lookup icon and select Look Up Devices (LAN).



3. A list of network cameras within a local network is displayed. Check the MAC address of the network camera to connect. You can check the MAC address in the sticker adhered to the network camera.

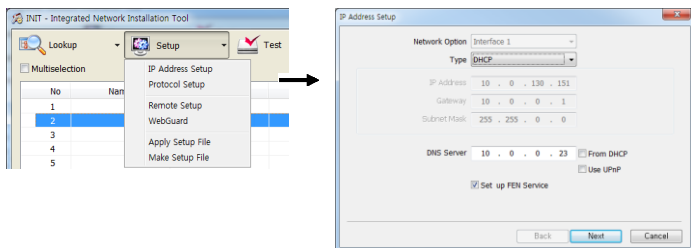


4. Check the IP address of the network camera to connect in the list of network cameras.
5. Run a remote program on the local PC and register the network camera on the remote program with the IP address.

### Connecting from Remote PC

If you want to connect to the network camera from a remote PC, it is required to change the network connection information of the network camera by connecting to the network camera from a local PC.

1. Find the network camera to connect. Refer to the explanation of procedures from 1 to 3 in the **To connect from a local PC** section above.
2. Select the network camera to connect and click the **Setup** icon. Select **IP Address Setup** and set up the network connection information as follows:



- **Type:** Select Manual, ADSL (with PPPoE) or DHCP depending on the network connection type. If you select Manual, you need to acquire the IP address, gateway and subnet mask from your network administrator or Internet service provider. The ADSL connection requires ID and password.
  - **DNS Server:** Enter the IP address of the DNS server. If you selected DHCP for the network connection type, selecting From DHCP automatically assigns the IP address of the DNS server.
  - **Set up FEN:** Enable the option by checking the box. When you check the box, the Next button at the bottom changes to Next. Click the Next button and enable the Use FEN option by checking the box. Set up the FEN function referring to the FEN Setup section below.
3. Set up the UPnP function in the NAT (Network Address Translation) device and the network camera. See the NAT device User's Manual for details about setting in the NAT device. See the UPnP Function Setup in Network Camera section below for details about setting in the network camera.

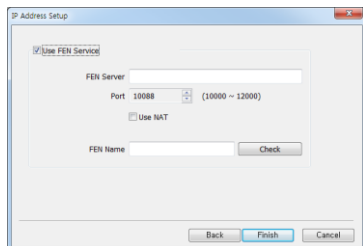
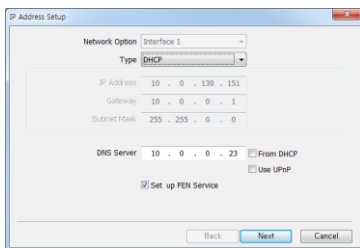
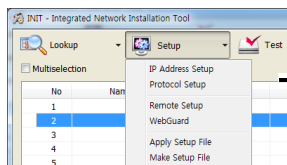
**NOTE:** If the NAT device does not support the UPnP function, you have to set up port forwarding manually. Also, if more than one network camera is connected to the NAT device, the port numbers of each network camera should be different. See the NAT device User's Manual for details about setting port forward in the NAT device. See the explanation of procedures from 1 to 3 in the *UPnP Function Setup in Network Camera* section below for details about changing port numbers of the network camera.

4. Run a remote program on a remote PC and register the network camera on the remote program with the name registered on the FEN server.

**NOTE:** Check that firewall is disabled in the router or NAT device. If firewall is enabled, you may not connect to the network camera. Ask your network administrator for details or see the NAT device User's Manual.

## FEN Setup

Run the INIT program on the local PC → Select the network camera → Click the Setup icon → Select IP Address Setup → Set up the network connection information and check the Set up FEN box → Click the Next button → Check the Use FEN box → Enter the FEN server information.



- **Use FEN:** Enter the IP address or domain name of the FEN server.
- **Port:** Set up the port number of the FEN server.
- **Use NAT:** Check the box when the camera uses a NAT (Network Address Translation) device for network connection.
- **FEN Name:** Enter the camera name to be registered on the FEN server. Check whether or not the name is available by clicking the Check button.

#### NOTES:

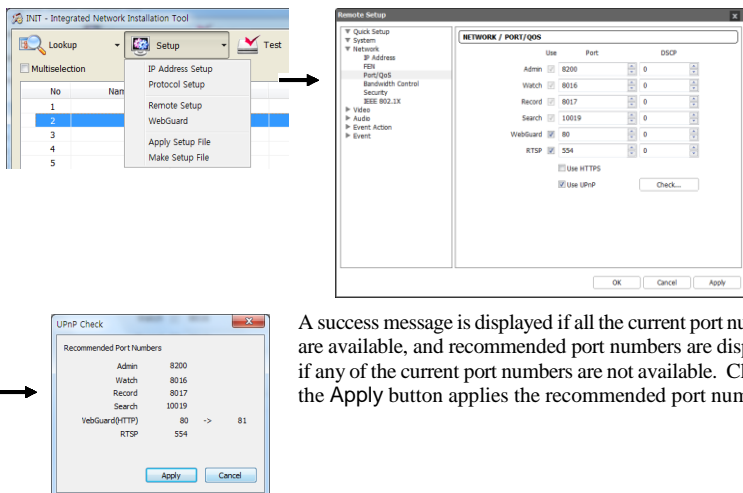
- The network camera supports FEN function. The FEN function allows you to access the network camera remotely by using the camera name instead of its IP address and it allows the network camera to use dynamic IP addresses for remote connection. For the FEN function to work properly, the camera should be registered on the FEN server.
- You will need to get the IP address or domain name and the port number of the FEN server from your network administrator.

**CAUTION:** The FEN server that we support is for your convenience and it can stop operating unexpectedly for the server update or malfunction. We are not responsible for any problems caused by the FEN server stopping operation.

### UPnP Function Setup in Network Camera

1. Run the INIT program on the local PC and find the network camera to connect. Refer to the Connecting from Local PC section.
2. Select the network camera to connect and click the Setup icon.
3. Select Remote Setup and select Network – Port/QoS from the menu on the left side.
4. Check the Use UPnP box at the bottom and click the Check button. The network camera checks the current port settings.

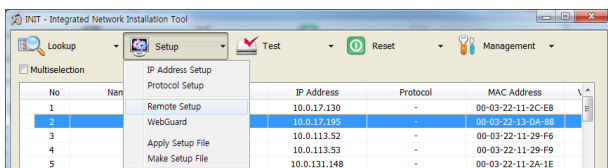




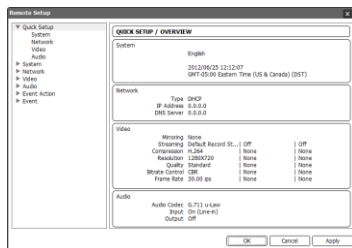
A success message is displayed if all the current port numbers are available, and recommended port numbers are displayed if any of the current port numbers are not available. Clicking the Apply button applies the recommended port numbers.

## Configuring Network Camera

Run the INIT program → Click a network camera from the device list → Click the Setup icon on the Main screen → Select Remote Setup from the Setup menu.



The Remote Setup screen appears, and you can change the settings of the network camera. See the User's Manual on the CD for details about the configuring each settings.



## Monitoring

Monitoring video from the network camera is supported on remote programs: RAS Mobile, WebGuard, iNEX Basic.


- RAS Mobile: Monitoring program on an Android or iOS based mobile device
- WebGuard: Web monitoring program
- iNEX Basic: Monitoring, recording and playback program

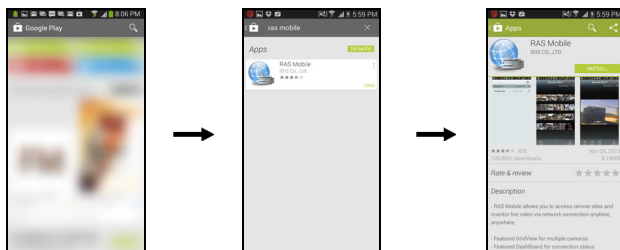
See the User's Manual of each program on the CD for details.

### RAS Mobile

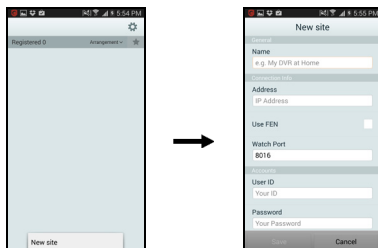
**CAUTION: This program uses large amounts of data and you are responsible for all data charges. Please contact your service provider's customer service to confirm or add an unlimited data plan.**

#### Android Based Mobile Devices


1. Run the  Play Store (Google Play) application in the mobile device.
2. Enter RAS Mobile in the search field of the Play Store (Google Play) application.
3. Install the RAS Mobile program and run the program.
4. Push the Menu button of the mobile device and the default menu is displayed.



5. Tap the Menu button on the mobile device and enter the device (network camera) information to register it.




- **General:** Enter a name of the device to be used in RAS Mobile.
- **Connection Info:** Configure FEN, remote address, and remote port settings.

**NOTE:** Deselect the checkbox if FEN is not enabled on the device. If using a separate FEN server, tap  (**Settings**) to configure FEN server settings. For more details, contact your FEN server administrator.


**NOTE:** If FEN feature is not enabled on the device, deselect *Use FEN* checkbox and enter the device's IP address under Address. Default value is recommended for the Port setting.

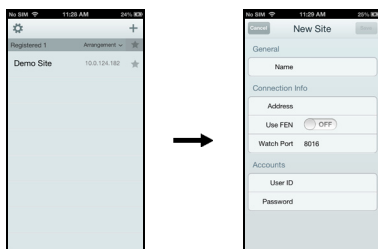
- **Accounts:** Enter the User ID and Password used to login to the device.

### iOS Based Mobile Devices


1. Run the  App Store application in the mobile device.
2. Enter RAS Mobile I in the search field of the App Store application.
3. Install the RAS Mobile I program and run the program.



4. Tap the  button on the title bar at the top and enter the device (network camera) information to register it.



- **General:** Enter a name of the device to be used in RAS Mobile I.
- **Connection Info:** Configure FEN, remote address, and remote port settings.

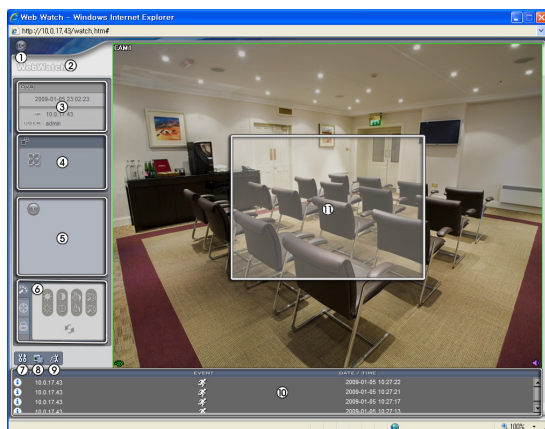
**NOTE:** Deselect the checkbox if FEN is not enabled on the device. If using a separate FEN server, tap  (**Settings**) to configure FEN server settings. For more details, contact your FEN server administrator.

**NOTE:** If FEN feature is not enabled on the device, deselect *Use FEN* checkbox and enter the device's IP address under Address. Default value is recommended for the Port setting.

- **Accounts:** Enter the User ID and Password used to login to the device.

## WebGuard

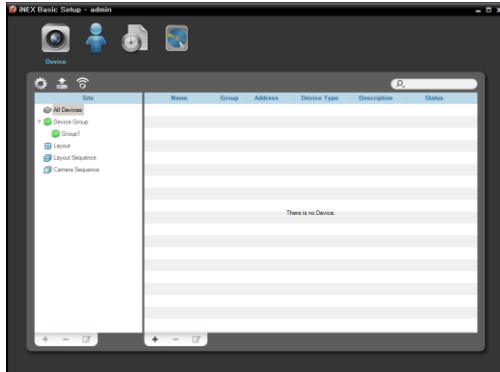
1. Start Internet Explorer on your PC.
2. Enter in the address field the network camera's IP address and WebGuard port number or FEN server address and FEN name registered on the FEN server  
(e.g. <http://10.0.127.1:80> in the case that the IP address is 10.0.127.1 and the WebGuard port number is 80, or <http://dvrmnames.net:camera1> in the case that the network camera uses the FEN function and the FEN server address is **dvronline.net** and FEN name is **camera1**)
3. Enter login information. The user ID and password you enter should match the user ID and password used to log on to the network camera (default user ID is **admin** and there is no default password).



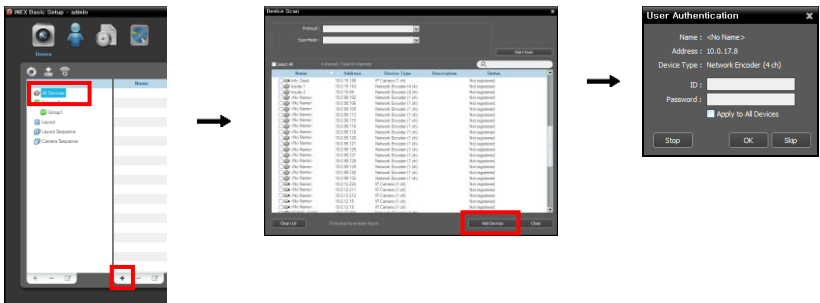
- ① Log Out
- ② Version
- ③ Information
- ④ Full Display
- ⑤ Camera Button
- ⑥ Image Adjustment
- ⑦ Setup
- ⑧ Save Image
- ⑨ Remote Setup
- ⑩ Event Status Window
- ⑪ Screen

## Recording and Playing Back

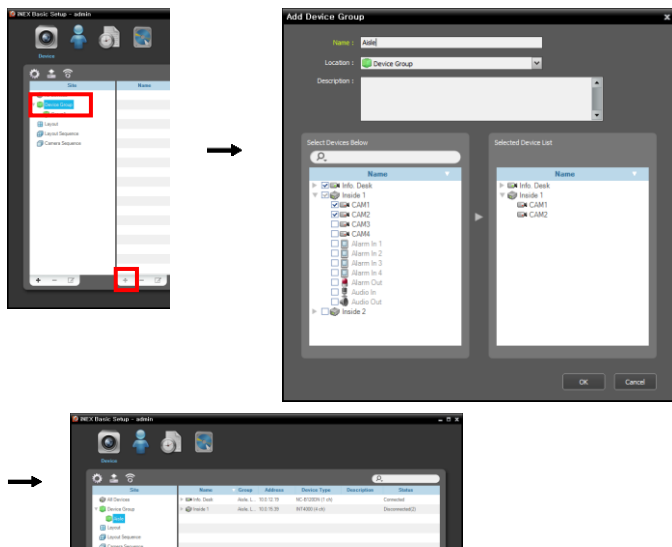
1. Insert the installation CD.
2. Install the iNEX basic installation file on the PC. See the User's Manual on the CD for details about installation.
3. Run the iNEX Basic Setup program as follows: Go to the Start menu on the PC → Click iNEX Basic and then iNEX Basic Setup → Enter login information (default user ID is admin and password is 12345678).



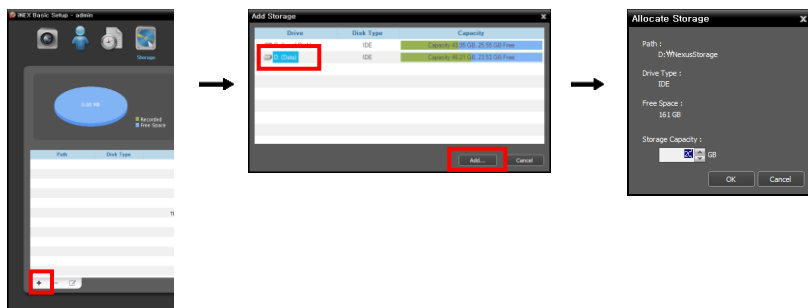
4. Register the device to record as follows: Go to the Device menu → Click All Devices in the Site panel, and then the **+** button at the bottom → Select the scan mode and find the device → Check the box beside the device name and click the Add Devices button at the bottom → Enter information set in the device.



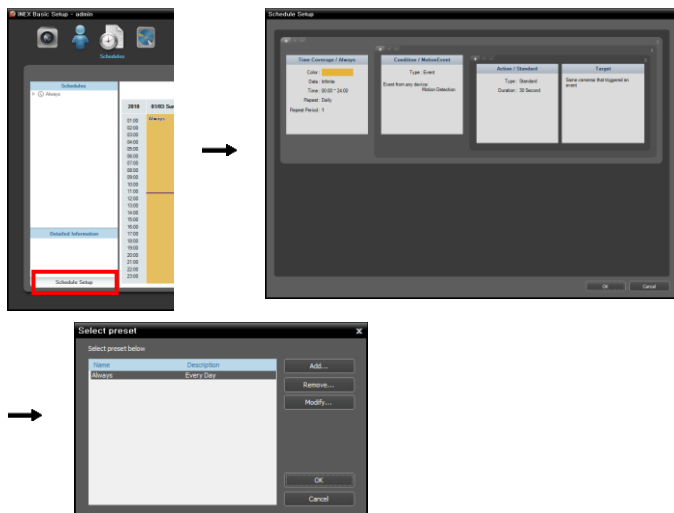
5. Add the device to Device Group as follows: Click Device Group in the Site panel, and then the **+** button at the bottom → A list of registered devices is displayed → Select the devices → The selected devices are displayed in Device Group.



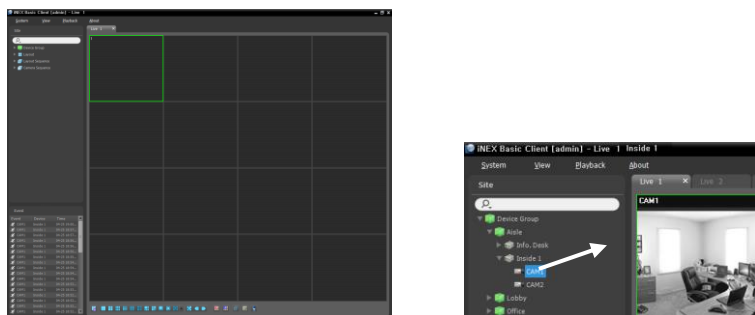
6. Allocate storage for recording as follows: Go to the **Storage** menu → Click the **+** button at the bottom → Select a hard disk drive from the list and click the **Add** button at the bottom → Allocate storage.



7. Configure recording schedule as follows: Go to the **Schedule** menu → Click the **Schedule Setup** button at the bottom. Schedule windows are displayed with the current settings for each Preset → Double click anywhere in the empty space of each schedule window, and the Preset setup window appears → Select a desired Preset from the Preset list or add a new Preset by clicking the **+** button.



8. Run the iNEX Basic Client program to monitor or playing back recorded video as follows: Go to the Start menu on the PC → Click iNEX Basic and then iNEX Basic Client → Enter login information (Default user ID: Admin, Default password: 12345678) → Click the Live or Play tab on the screen → Click a device in the Site panel and drag and drop it on the screen → Video from the device will be displayed on the screen.



**NOTE:** See the User's Manual on the CD for details.

**COSTAR**

**COSTAR VIDEO SYSTEMS**

101 Wrangler, Suite 201 Coppell, Texas 75019

Phone: (469) 635-6800

Fax: (469) 635-6822

Toll-free: (888) 694-7827