

### 1.3 Mega Pixel Network Indoor Dome Camera



#### Description:

The CDIH116IR indoor dome camera provides high quality video with 1.3 mega pixel resolution. The ability to be powered by PoE simplifies installation. Costar Video's IP cameras are compatible with the iNEX user interface platform. The iNEX user interface incorporates features such as simplified user management, advanced camera mapping and logical camera grouping making it easier to monitor and access each of your cameras. The iNEX user interface also has the ability to integrate both analog and IP camera technology on the same platform allowing you to have a diverse surveillance system. Costar Video's IP cameras are OnVIF supported. The industry standard OnVIF protocol makes it easy to integrate Costar branded IP cameras with OnVIF compatible recorders.

#### Features:

- 1.3 mega pixel resolution
- 3.6-16 mm auto iris and vari-focal lens
- 1/3" MOS Progressive Scan image sensor
- True day/night with IR cut filter
- OnVIF supported; iNEX compatible
- Two-way audio communication
- SD memory card supported
- Multiple compression (H.264, MJPEG)
- Motion detection
- Dual IP streaming
- Dynamic adjustment bit rate
- Event buffering
- FTP image upload
- Password protection, IP filtering
- Power over Ethernet (PoE) or DC12V



# CDIH116IR Specifications

Model	Lens (mm)	Resolution
CDIH116IR	3.6-16 mm	1.3 Mega Pixel

Power	
Power Source	DC12V or PoE
PoE	802.3af
Power Consumption	600 mA Max
Sensor	
Image Sensor	1/3" MOS Progressive Scan
Lens	3.6-16 mm Auto Iris and Vari-focal
Minimum Illumination	Color: 0.5 Lux (F1.2) B&W: 0.02 Lux (F1.2)
Resolution	1.3 MP (1280x1024) HD (1280x720) VGA (640x352) CIF (320x176) QCIF (160x96)
Frame Rate	Up to 30 fps
Video Features	
Video Compression	H.264, MJPEG
Video Streaming	Dual Stream
Video Standards	OnVIF, PSIA
Camera Functions	
Audio	1ch. Audio-in 1ch. Audio-out
Audio Encoding	8 bit PCM (G.711) Mono
Day/Night	Yes; with IR cut filter
Event Buffering	Yes; pre & post event
Event Notification	Yes; email with image
FTP Upload	Yes
Motion Detection	Yes; -100 to 100 Sensitivity Settings
System	
Auto Recovery	Yes
Reset Settings	Soft or Factory Reset
Security	Password Protection Alarm I/O, Audio, PTZ
Firmware Upgrade	HTTP, Telnet or FTP
Supported Protocols	HTTP, RTP/RTSP, ICP/IP, FTP, Telnet, RARP, PPPoE, PAP, CHAP, DHCP, SMTP, client (email), NTP

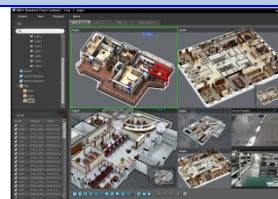
## Network

Maximum Connections	16 (Live)
DVRNS	Yes
Remote Access	iNEX Interactive

## General Information

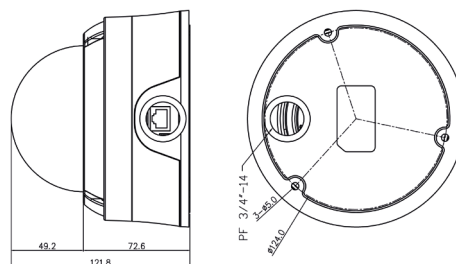
Operating Temperature	32°F to 122°F (0°C to 50°C)
Operating Humidity	80% RH Max
Approvals	FCC (Class A), CE (Class A), RoHS
Dimensions (l x w x h)	6.0" x 3.11" x 3.0" (152.4 x 78.9 x 76.2 mm)

## Applications



**iNEX**  
Connect and manage  
IP and Analog cameras on  
a single user interface.

## Dimensions



**Costar**  
VIDEO SYSTEMS

101 Wrangler, Suite 201 • Coppell, Texas 75019 • Phone: 469-635-6800 • Fax: 469-635-6822 • Toll Free: 1-888-694-STAR (7827)

[www.costarvideo.com](http://www.costarvideo.com)

*Specifications and design are subject to change without notice. Conversions: 1" = 25.4mm Measurement conversions are approximate.*